



KENTON COUNTY EMERGENCY SUPPORT FUNCTION

KENTON COUNTY, KENTUCKY EMERGENCY OPERATIONS PLAN ***PUBLIC INFORMATION*** ***ESF-15***

Coordinates and organizes public information resources in preparing for, responding to and recovering from emergency/disaster incidents which impact the citizens of Kenton County.

ESF Coordinators:

Primary:

Kenton County Judge Executive,

Alternates:

Kenton County Deputy Judge Executive,
County Administrator

Primary Agencies:

Kenton County Judge Executive
Mayor of Covington and Covington City Council members
Mayor of the Cities of Crescent Springs/Villa Hills
Mayor of Lakeside Park
Mayor of Edgewood
Mayor of Elsmere
Mayor of Erlanger
Mayor of Fort Mitchell
Mayor of Fort Wright
Mayor of Independence
Mayor of Ludlow
Mayor of Park Hills
Mayor of Ryland Heights
Mayor of Taylor Mill
Kenton County Emergency Management Agency

Support Agencies:

Kenton County Sheriff's Office
Kenton County Road Department



KENTON COUNTY EMERGENCY SUPPORT FUNCTION

Kenton County EMS
Kenton County Animal Control
Kenton County Detention Center
Kenton County Parks and Recreation Department
Bromley Fire Department
Covington Fire Department
Crescent Springs/Villa Hills Fire Department
Edgewood Fire Department
Elsmere Fire Department
Erlanger Fire Department
Fort Mitchell Fire Department
Fort Wright Fire Department
Independence Fire Department
Kenton Fire Department
Ludlow Fire Department
Park Hills Fire Department
Ryland Heights Fire Department
Taylor Mill Fire Department
Kenton County Fire Chiefs Association.

Other Local Agencies:

Mayor of Covington and Covington City Council members
Covington Police Department
Covington Dispatch
Covington Code Enforcement
City of Covington School Board
Lakeside Park Police Department
Edgewood Police Department
Elsmere Police Department
Erlanger Police Department
Fort Wright Police Department
Independence Police Department
Kenton County Police Department
Kenton County Sheriff's Department
Ludlow Police Department
Park Hills Police Department
Taylor Mill Police Department
Villa Hills Police Department
Erlanger Dispatch Center
Kenton County Dispatch Center
Kenton County School Board



KENTON COUNTY EMERGENCY SUPPORT FUNCTION

Kenton County School Resource Officer
Kenton County Jailer
American Red Cross (Cincinnati branch)
Cincinnati Bell
Kenton County Department of Public Works
Cities of Covington
Crestview Hills
Crescent Springs
Elsmere
Erlanger
Fort Mitchell
Fort Wright
Independence
Taylor Mill
Park Hills
Villa Hills Departments of Public Works
Northern Kentucky Independent Health District.

Regional Support/Resources

Boone County Dispatch, Campbell County Dispatch

State Agencies

Kentucky Division of Emergency Management

(Not all agencies are listed under these sections, as it would vary and be difficult to include all agencies that could be affected by the impact of a disaster. This ESF will expand/collapse as needed during an incident.)

Introduction

The Public Information Emergency Support Function (ESF-15):

- identifies and organizes the resources (human, technical, equipment, facility, materials and/or supplies) available to Kenton County, the City of Covington, the City of Bromley, the City of Crescent Springs/Villa Hills, the City of Lakeside Park, the City of Edgewood, the City of Elsmere, the City of Erlanger, the City of Fort Mitchell, the City of Fort Wright, the City of Independence, the City of Kenton Vale, the City of Ludlow, the City of Park Hills, Fire District, the City of Ryland Heights and the City of Taylor Mill to address and support public information needs in the event of either a natural or man-made disaster or emergency situation;



KENTON COUNTY EMERGENCY SUPPORT FUNCTION

- identifies the responsibilities of organizations charged with providing public information in the case of a disaster or emergency situation;
- is established to assure the provision of public information support to Kenton County, the City of Covington, the City of Bromley, the City of Crescent
- Elsmere, the City of Erlanger, the City of Fort Mitchell, the City of Fort Wright, the City of Independence, the
- City of Ludlow, the City of Park Hills, the City of Ryland Heights and the City of Taylor Mill and private-sector response before, during and after an incident/event;
- provides personnel and resources to support prevention, preparedness, protection, response, recovery and mitigation in support of the primary emergency management objectives of public information in emergency and disaster situations.

Mission

The mission of the Public Information Emergency Support Function is to coordinate and organize public information resources in preparing for, responding to and recovering from emergency/disaster incidents which impact the citizens of Kenton County.

Scope

The scope of this ESF includes:

- assessing public information system damage and determining the required resources to restore such public information systems;
- coordinating with ESF-15/Public Information support agencies for assistance in helping public information suppliers obtain information, equipment, specialized labor, fuel and transportation to repair or restore energy systems;
- coordinating information with local, state, and federal officials and suppliers about available public information supply recovery assistance;
- providing technical assistance concerning public information systems.

ESF-15/Public Information is a functional annex to the Kenton County Kentucky Emergency Operations Plan and, to the extent possible, information contained in other sections of the EOP will not be repeated in this ESF annex. Many of the agencies involved in ESF-15/Public Information activities have existing emergency plans and procedures which this ESF Annex is designed to complement and support.

This Emergency Support Function applies to all agencies with assigned public information emergency responsibilities as described in the Kenton County Kentucky Emergency Operations Plan.

Situations and Assumptions



KENTON COUNTY EMERGENCY SUPPORT FUNCTION

Some of the situations and assumptions involved in planning ESF-15/Public Information planning include but are not limited to the following:

- the ESF-15 Coordinator may or may not be the Public Information Officer (PIO). If the ESF-15 Coordinator is not the PIO, then the Chief Elected Officials will appoint a PIO;
- an incident has occurred and public perception is such that people believe they have been placed in danger by a natural or manmade incident;
- emergency public information actions will be determined by the severity of the situation as declared by involved entities, or as perceived by the public;
- local jurisdictions and other response organizations will be notified when an emergency or disaster has occurred that requires and emergency public information response;
- the Emergency Alert System (EAS) is activated as the principal means to disseminate emergency warnings and priority emergency instructions to the public;
- the PIO will coordinate the dissemination of all official public information from county, local and private emergency services and disaster response agencies providing support during the incident;
- responding agencies will provide instructions and information to the public about the incident and actions people should take to save and protect life, property, economy and the environment and provident information to reduce public concerns about the incident and response activities;
- the PIO has established close working relationships with the news media for the dissemination of emergency public information.

Concept of Operations

The Kenton County Emergency Operations Center (EOC) serves as the central location for interagency coordination and executive decision-making, including all activities associated with ESF-15/Public Information during a disaster/emergency event. The ESF-15 Primary Agencies work with the EOC management team to ensure that necessary public information tasks are accomplished. The Support and Partnering Agencies provide resources and personnel to assist in accomplishing ESF-15 activities as required by the size and demands of the event. As calls are received requesting services and resources during an emergency/disaster situation, they are routed to the ESF-15/Public Information desk to determine appropriate action.

General

ESF-15/Public Information is organized consistent with the requirements of the National Response Plan, the National Incident Management System and uses the Incident Command System (composed of Planning, Operations, Logistics and



KENTON COUNTY EMERGENCY SUPPORT FUNCTION

Finance/Administration Sections with their standardized Units, Teams, positions, forms and terminology) to manage its emergency/disaster responsibilities. This structure and system supports incident assessment, planning, procurement, deployment and coordination of public information support operations for Kenton County, the City of Covington, the City of Bromley, the City of Crescent Springs/Villa Hills, the City of Lakeside Park, the City of Edgewood, the City of Elsmere, the City of Erlanger, the City of Fort Mitchell, the City of Fort Wright, the City of Independence, the City of Ludlow, the City of Park Hills, the City of Ryland Heights and the City of Taylor Mill. Pursuant to the Incident Command System structure, the Planning, Logistics, Finance/Administration and Operations Section Coordinators and staff at the Emergency Operations Center (EOC) assist the EOC Manager in achieving the overall mission. Sections, Units, Teams, staffing levels, etc. are modular and scalable, depending on the type, size, scope and complexity of the emergency or disaster event.

Procedures, protocols and plans for public information disaster response activities provide guidelines for operations at the Kenton County Emergency Operations Center and in the field.

- the Emergency Operations Plan and corresponding Appendices, Incident Annexes, Support Annexes and Standard Operating Guidelines that describe ESF-15/Public Information capabilities are based on National Planning Scenarios, Universal Task List and Target Capabilities and are the basis of these guidelines;
- periodic training and exercises are conducted to enhance effectiveness;
- public information planning is continuous, beginning well before impact of approaching natural disasters and immediately upon those not forecasted.

A large event requiring regional, state and/or interstate mutual aid assistance will require ESF-15/Public Information implementation. ESF-15/Public Information will coordinate with support agency counterparts to seek and procure, plan, coordinate and direct the use of any required public information assets.

When an event requires a specific type or response mode, public information technical and subject matter expertise may be provided by an appropriate person(s) from a supporting agency with skills relevant to the type of event. The individual will advise and/or direct operations within the context of the Incident Command System structure.

As illustrated in Figure 15-1: *ESF-15/Public Information Concept of Operation*, ESF-15 will give priority to five fundamental, interrelated functions:

- use technology and human intelligence to collect, analyze and disseminate information on direct and indirect disaster impacts,



KENTON COUNTY EMERGENCY SUPPORT FUNCTION

- assess the capabilities of local government, the business community and volunteer agencies to effectively respond to the disaster;
- assess and prioritize the immediate needs of impacted communities, neighborhoods and areas of the county;
- incorporate the analyses into Incident Action Plans that establish operational objectives and identify resource requirements to accomplish these objectives;
- utilize an Incident Action Matrix to establish priorities, assign tasks to agencies and track progress in meeting objectives.

Each public information organization which enters into a mutual aid agreement will furnish a copy of the agreement to the Kenton County Emergency Management Agency.

- The Kenton County Emergency Management Agency will maintain up-to-date information of public information services in Kenton County including:
 - names of responsible officials (reviewed/updated quarterly),
 - ESF-15/Public Information staffing directory (reviewed/updated quarterly),
 - ESF-15/Public Information notification lists (reviewed/updated quarterly),
 - major public information equipment identified in Resource Typing and readiness status (reviewed/updated annually).

1. ASSESS IMPACTS
2. ASSESS LOCAL RESPONSE CAPABILITIES
3. PRIORITIZE NEEDS OF IMPACTED AREAS
4. PREPARE AND IMPLEMENT INCIDENT ACTION PLANS (IAP)
5. PREPARE AND IMPLEMENT INCIDENT ACTION MATRI

Figure 15-1: *ESF-15/Public Information Concept of Operations*

The ESF-15/Public Information Emergency Operations Plan plus accompanying Appendices, Annexes and Standard Operating guidelines are maintained by the Kenton County Emergency Management Agency and are reviewed and updated by the public information planning committee with the Kenton County Emergency Management

Agency at least annually. Support agencies may develop and maintain their own similar documents for internal use, which must be compatible with and in support of the overall Emergency Operations Plan. All such documents must be compliant with the National Response Plan, National Incident Management System, Incident Command System and the Emergency Operations Plan (EOP).



KENTON COUNTY EMERGENCY SUPPORT FUNCTION

Public information organizations are responsible for training and continuing education of their personnel.

The Kenton County Emergency Operations Center uses WebEOC (crisis management software) to supplement disaster management planning and actions. Specifically, all of the applicable Emergency Support Functions, agency based emergency operations centers, and other facilities or functions as appropriate are able to communicate their needs and status through WebEOC. This allows all of the information to be integrated for the specific event and to assess what actions, resources and needs exist.

Notifications

Kenton County E911 Dispatch is the county's 24 hour Warning Point.

When the county or an area of the county has been threatened or impacted by an emergency or disaster event, Kenton County E911 Dispatch will notify the Kenton County Emergency Management Agency Director who in turn will notify the State Emergency Operations Center Duty Officer. The state Emergency Operations Center notifies applicable state agencies including the Regional Response Manager of KyEM Region 6.

ESF-15/Public Information will be activated or placed on standby upon notification by the Kenton County Emergency Management Agency. Upon instructions to activate this Emergency Support Function, the ESF-15 Coordinator and Support Agencies will implement their procedures to notify and mobilize all personnel, facilities and physical resources potentially needed, based on the emergency circumstance.

Direction and Control

The Kenton County Judge Executive, the Mayor of Covington and Covington City Council members, Mayor of the Cities of Crescent Springs/Villa Hills, Mayor of Lakeside Park, Mayor of Edgewood, Mayor of Elsmere, Mayor of Erlanger, Mayor of Fort Mitchell, Mayor of Fort Wright, Mayor of Independence, Mayor of Ludlow, Mayor of Park Hills, Mayor of Ryland Heights and the Mayor of Taylor Mill, and the Kenton County Emergency Management Agency are the lead agencies for ESF-15 and will manage the emergency activities of ESF-15/Public Information. Public Information operates from the

Kenton County Emergency Operations Center (EOC) on a 24 hour/7 days a week schedule to help maintain the flow of public information services.

The Kenton County Emergency Management Agency functions as the official disaster organization for preparedness, mitigation, response and recovery within Kenton County and serves as the focal point for ESF-15 activities. It is responsible for ensuring that all appropriate program departments, support agencies, other Emergency Support



KENTON COUNTY EMERGENCY SUPPORT FUNCTION

Functions and private voluntary agencies have knowledge about the system and ESF-15 expectations.

The ESF-15/Public Information system operates at two levels – the Emergency Operations Center and field operations.

All management decisions regarding county and/or regional resource allocation are made at the Emergency Operations Center by the ESF-15/Public Information Coordinator during emergency activations. In accordance with a mission assignment from ESF-15 and further mission tasking by a local primary agency, each support organization assisting in an ESF-15/Public Information assignment will retain administrative control over its own resources and personnel but will be under the operational control of ESF-15.

Organization

Response to an emergency/disaster event in Kenton County is progressive as demonstrated in Figure 15- 2: *Progressive Requests for Emergency/Disaster Resources*. The initial response to an emergency/disaster situation is met by the use of the public information resources available at the local level. Kenton County Fiscal Court, Kenton County, the City of Covington, the City of Bromley, the City of Crescent Springs/Villa Hills, the City of Lakeside Park, the City of Edgewood, the City of Elsmere, the City of Erlanger, the City of Fort Mitchell, the City of Fort Wright, the City of Independence, the City of Ludlow, the City of Park Hills, the City of Ryland Heights and the City of Taylor Mill, activate available resources. When the public information needs for resources and/or services exceed the capability of what is available in the jurisdictions within Kenton County, established mutual aid agreements with surrounding counties to provide public information, such resources are utilized. When needed public information resources cannot be located through mutual aid agreements, the Kenton County Emergency Operations Center requests resources through the state Emergency Operations Center. The state Emergency Operations Center locates resources through intra- and inter-state mutual aid agreements and federal assets.

STATE EMERGENCY OPERATIONS CENTER

KENTON COUNTY EMERGENCY OPERATIONS CENTER

ESF-15 COORDINATOR

COVINGTON CITY RESOURCE

BROMLEY CITY RESOURCE

CRESCENT SPRINGS CITY RESOURCE

LAKESIDE PARK CITY RESOURCE

EDGEWOOD CITY RESOURCE

ELSMERE CITY RESOURCE



KENTON COUNTY EMERGENCY SUPPORT FUNCTION

ERLANGER CITY RESOURCE
FORT MITCHELL CITY RESOURCE
FORT WRIGHT CITY RESOURCE
INDEPENDENCE CITY RESOURCE
LUDLOW CITY RESOURCE
PARK HILLS CITY RESOURCE
RYLAND HEIGHTS CITY RESOURCE
TAYLOR MILL CITY RESOURCE
VILLA HILLS CITY RESOURCE
KENTON COUNTY RESOURCE

Requests for Emergency Assistance Flow Upwards from the Lowest Level

MUTUAL AID AGREEMENTS
INTRA-STATE MUTUAL AID AGREEMENTS
INTER-STATE MUTUAL AID AGREEMENTS
FEDERAL ASSETS

Figure 15-2: Progressive Requests for Emergency/Disaster Resources County

Kenton County Emergency Management will initiate ESF-15/Public Information notification and will request assistance from the primary and support agencies to help staff the ESF-15 position in the Kenton County Emergency Operations Center. In the Incident Command Structure, ESF-15/Public Information is located directly under the EOC Manager as shown in Figure 15-3: *Incident Command System Structure: ESF-15/Public Information*.

KENTON COUNTY EOC MANAGER

PUBLIC INFORMATION ESF-15

ESF-15
LIAISON
SAFETY
OPERATIONS
PLANNING
LOGISTICS
FINANCE

During an activation of the EOC, support agency staff is integrated with the public information staff to provide support that will allow for an appropriate, coordinated and timely response.

Throughout the response and recovery periods, ESF-15/Public Information:



KENTON COUNTY EMERGENCY SUPPORT FUNCTION

- collects, analyzes, and disseminates tactical information on the nature, scope and potential impacts of an incident or major disaster related to public information;
- evaluates and analyzes information regarding public information requests;
- develops and updates assessments of current and anticipated future public information needs and resource requirements,
- implements contingency planning to meet anticipated public information demands or needs;
- incorporates this analysis into Incident Action Plans; and
- uses this intelligence to support the Logistics, Operations and other ESFs in their impact assessment and response missions.

Region

When local resources are overwhelmed or depleted, additional public information resources are obtained through established mutual aid agreements Kenton County has with counties in the region. The Public Information Chief, in consultation with the requesting jurisdiction, contacts the agencies with whom mutual agreements are in effect to determine if the requested resources are available.

Additionally, either the KyEM Region 6 Response Manager or the state Emergency Operations Center can be contacted to determine the appropriate state agency serving as the lead agency for public information coordination/support at the state level. That agency can designate a liaison to the Kenton County EOC to assist Emergency Support Function 15 and to the extent capable provide coordinators, assessors and operational personnel in support of the EOC or field activities.

On activation of an emergency operations center in more than one county, the lead agency for public information coordination/support at the state level may support the coordination of the event response with regional resources or request additional resources through the State Emergency Operations Center.

State

During an emergency or disaster event, ESF-15/comparable primary and support agencies at the State Emergency Operations Center report and function under the overall direction of the Kentucky Division of Emergency Management Director.

During the response phase, ESF-15/comparable evaluates and analyzes information regarding public information requests. ESF-15/comparable also develops and updates assessments of the public information situation/status in the impact area and initiate contingency planning to meet anticipated demands and needs.



KENTON COUNTY EMERGENCY SUPPORT FUNCTION

The Kentucky Division of Emergency Management develops and maintains the overall State Emergency Operations Plan and accompanying Appendices and Standard Operating Guidelines that govern response actions related to emergencies. Support agencies may develop and maintain their own similar documents for internal use, which must be compatible with and in support of the overall Emergency Operations Plan. All such documents will comply with the National Response Plan, the National Incident Management System and the Incident Command System.

Actions

Actions initiated by ESF-15 are grouped into the phases of emergency management: preparation, mitigation, response and recovery. Each phase requires specific skills and knowledge to accomplish. Each phase requires significant cooperation and collaboration between all supporting agencies and the intended recipients of service.

Preparedness Actions

Actions and activities that develop public information capabilities may include planning, training, orientation sessions and exercises for ESF-15 personnel and other emergency support functions that will respond with ESF-15. This involves the active participation of local inter-agency preparedness organizations, which collaborate in such activities on a regular basis.

Initiatives also include:

- coordinating with local media on public information procedures, content of information, information dissemination strategies and roles and responsibilities of the Public Information Officer under the Incident Command System;
- assisting in the dissemination of written and graphic disaster preparedness materials such as brochures and publications, public presentations, news releases and media events to
- encourage preparedness activities;
- raise awareness and personal responsibility to minimize the loss of life and property during a disaster;
- identify vulnerable areas for each hazard as described in the All Hazards Mitigation Plan;
- training Public Information Officers in the role of the PIO under NIMS and the Incident Command System including legal issues, risk communication, communication in emergencies and the role of the Joint Information System;
- training and preparing ESF-15 staff in the use of disaster intelligence from ESF 5, including how the intelligence can be effectively used in communications with



KENTON COUNTY EMERGENCY SUPPORT FUNCTION

news media on potential consequences of hazards on people, buildings and infrastructure;

- coordinating with the Kentucky Division of Emergency Management, specifically the
- application of multimedia public information strategies, techniques and monitoring efforts;
- coordinating public information resources by the Public Information Officer (PIO) at the Emergency Operations Center (EOC).

Response Actions

Response activities/initiatives include:

- notifying the media of disaster impacts, protective measures and other topics that will facilitate and expedite response and recovery and address public information needs;
- managing phone calls from individuals attempting to contact the Kenton County Emergency Management Agency for information;
- providing updates to the news media about disaster conditions and actions taken in response to those conditions, primarily information and instructions provided for the survival, health and safety of the citizens in the impacted area.;
- preparing informational releases using the following prioritization:
- lifesaving, including information essential to survival, health and safety;
- recovery, including instructions concerning disaster recovery, relief, programs and services;
- releasing non-emergency notices by participating government and volunteer agencies;
- training public information staff in support roles to assist local response and recovery efforts;
- coordinating with ESF-15 to provide public information concerning what types of volunteer service are required;
- participating in EOC briefings, Incident Action Plans, Situation Reports and meetings;
- providing staff if establishment of Joint Information Center is required;
- coordinating to provide citizens with information regarding available resources and services;
- all available means to disseminate emergency public information to the general public will be used if necessary, including:
 - amateur radio;
 - broadcast media;
 - door to door notification;



KENTON COUNTY EMERGENCY SUPPORT FUNCTION

- email lists;
- facsimile;
- official internet websites;
- mobile public address systems;
- print media;
- telephone;
- weather/tone alert radios via NWS/NOAA;
- 1650 AM emergency alert radio.

Recovery Actions

Recovery actions/initiatives include:

- coordination with ESF 5-Emergency Management in assessing disaster recovery issues, priorities, problems and other factors that need to be shared with the news media, including questions on damage assessment findings, disaster response performance and other potentially sensitive issues.
- coordination with ESF 6-Mass Care) to announce status of shelters, location of mass feeding and/or supplies distribution sites and comfort stations;
- providing staff if establishment of a Joint Information Center is required;
- maintaining records of all releases for documentation after the event;
- including in informational releases-
 - o disaster assistance information;
 - o descriptions of recovery efforts;
 - o actions being taken to alleviate problems, and;
 - o available public assistance programs.

Mitigation Actions

Mitigation actions/initiatives:

- coordinating with All Hazard Mitigation Project Staff and other mitigation officials in developing and disseminating messages to the media on-
 - o the role of mitigation in reducing future disaster losses;
 - o mitigation success stories in Kenton County, and;
 - o other mitigation issues.

Responsibilities

All tasked agencies will:

- develop applicable standard operating procedures, guidelines and/or checklists which clearly define the role of this emergency support function in the overall functioning of the Kenton County EOC and detail the accomplishment of their assigned functions;



KENTON COUNTY EMERGENCY SUPPORT FUNCTION

- train staff in the standard operating procedures, guidelines and/or checklists that outline the courses of action to be taken during a pending or actual disaster or emergency situation;
- participate in drills to exercise these procedures and actions on a regular basis;
- participate in honest appraisals of the performance of the Public Information role and actions after each drill, exercise and actual activation of the Kenton County EOC;
- participate in a continuous quality improvement process that uses the findings of the performance appraisals and the lessons learned to continuously refine the role and actions of this emergency support function in the overall functioning of the Kenton County EOC and incorporate these into clearly written procedures which are shared with all staff and involved agencies;
- deploy a representative to the EOC to assist with emergency management activities;
- provide on-going status reports as requested by the Emergency Management Coordinator;
- document all costs and expenses associated with response and recovery activities taking care to clearly separate disaster-related work from daily work in the event that State and Federal reimbursement becomes available;
- maintain up-to-date rosters for notifying personnel and 24-hour EOC staffing capabilities, and provide this information to the Kenton County Emergency Management Agency;
- perform other emergency responsibilities as assigned.

Primary Agencies:

Kenton County Judge Executive, Mayor of Covington and Covington City Council members, Mayor of the Cities of Crescent Springs/Villa Hills, Mayor of Lakeside Park, Mayor of Edgewood, Mayor of Elsmere, Mayor of Erlanger, Mayor of Fort Mitchell, Mayor of Fort Wright, Mayor of Independence, Mayor of Ludlow, Mayor of Park Hills, Mayor of Ryland Heights and the Mayor of Taylor Mill, Kenton County Emergency Management Agency ESF-15 disseminates emergency information to the general public during disasters. ESF-15 provides information to the news media in briefings, Situation Reports, news releases, or emergency alert announcements. ESF-15's duties during activations include:

- disseminating information concerning the disaster and its associated threats and protective actions to the news media and general public;
- determining appropriate vehicle/format for all communications, releases, advisory bulletins and interviews;
- correcting misinformation being disseminated by media;
- providing information for website press releases;



KENTON COUNTY EMERGENCY SUPPORT FUNCTION

- approving emergency information for publication on the Kenton County website;
- coordinating public information concerning needed volunteer goods and services;
- coordinating with support agencies in the preparation of consistent and accurate messages and the dissemination of messages through timely briefings and news conferences;
- maintaining a contact list of media and ESF-15 staff in the EOC;
- creating bulletins and handouts for the public;
- scheduling personnel coverage to overlap to ensure continuation of function;
- maintain a log of events via WebEOC.

Support Agencies:

Support agencies will provide assistance to the Emergency Support Function with:

- performing the above-outlined tasks as requested by the ESF Coordinator;
- services, staff, equipment, and supplies that complement the entire emergency response effort
- reporting current resources capabilities on a regular basis.

The Public Information Officer, Judge Executive's Communication Staff, will work closely with Public Information Officers from support agencies to ensure consistency and accuracy in the development and delivery of messages on disaster impacts, actions taken, protective measures for the public and other issues. ESF-15 will coordinate with the media representatives or PIOs from the following agencies:

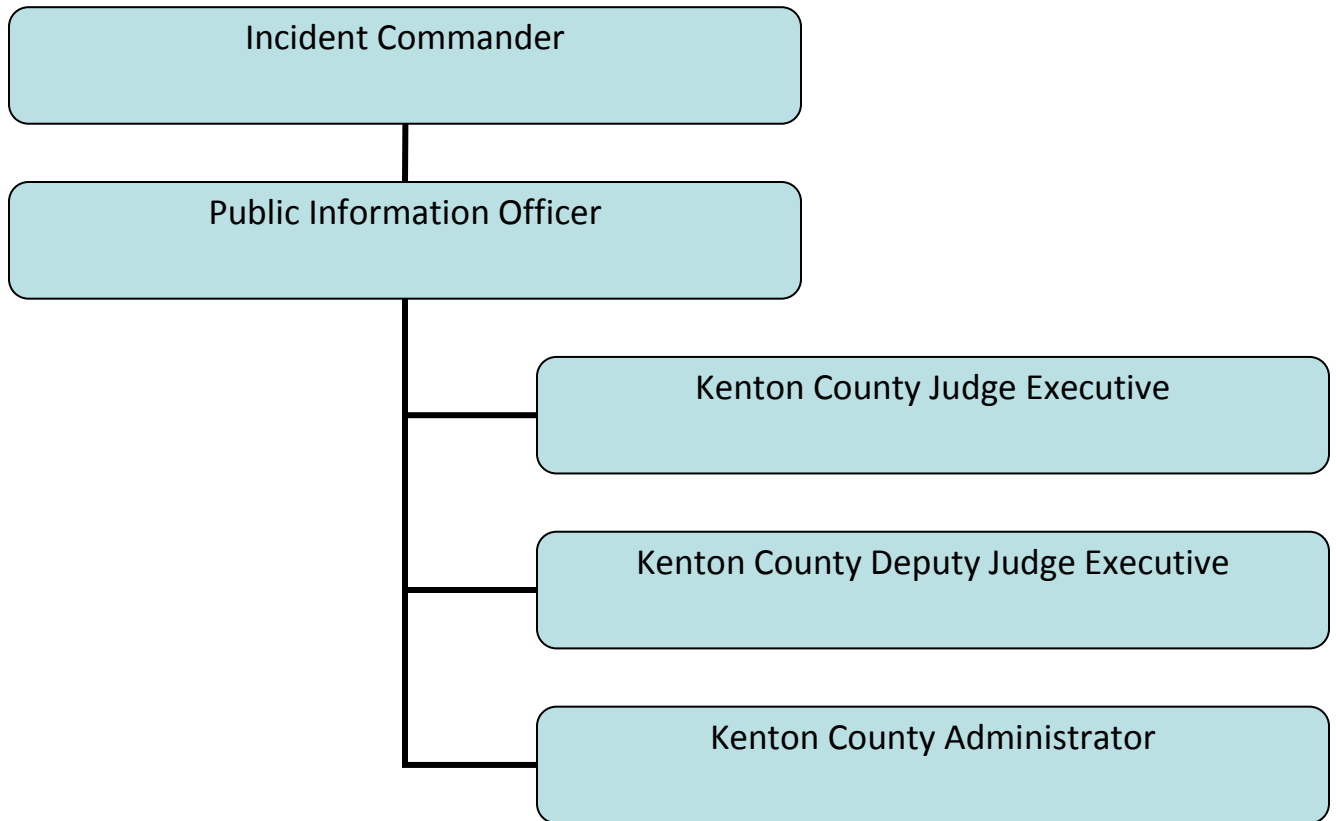
- Kenton County Emergency Management Agency;
- National Weather Service/Emergency Alert system.

ESF-15 will also coordinate with PIOs from other agencies to include state and federal, especially if a Joint Information Center is established. Each agency can provide one PIO to the JIC for information processing and dissemination.



KENTON COUNTY EMERGENCY SUPPORT FUNCTION

Organizational Chart





KENTON COUNTY EMERGENCY SUPPORT FUNCTION

Administration and Support

Support

Requests for emergency assistance will be resolved at the lowest level direction and control facility with appropriate response resources capabilities. Unresolved assistance requests will normally flow upward from cities to the county and/or field deployed command posts to responsible representatives in the State Emergency Operations Center, and as required to other states or the federal government for assistance support.

Agreements and Understandings

All agreements and understandings entered into for the purchase, lease, or otherwise use of equipment and services, will be in accordance with the provision of laws and procedures.

Status Reports

The primary agency will maintain status of all outstanding assistance requests and unresolved ESF-15/Public Information related issues. This information will be summarized into periodic status reports and submitted in accordance with applicable operating procedures.

Expenditures and Recordkeeping

Each ESF-15/Public Information agency is responsible for establishing administrative controls necessary to manage the expenditure of funds and to provide reasonable accountability and justification for federal reimbursement in accordance with the established guidelines. The first source of funds for expenditures by agencies in response to emergency, imminent disaster, or recovery from a catastrophic incident, is to be from funds associated with each local agency.

ESF-15/Public Information is responsible for managing financial matters specific to ESF-15/Public Information activity and related to resources procured/used during an event and forwarding that information to the Finance/Administration Section. However, each local government/agency/department must also track and record its own expenditures to ensure accuracy with any submissions for potential reimbursement. Information will be provided post-event as to application procedures for reimbursement. The Finance/Administration Section will coordinate with the Logistics Section to ensure that procurements and staff hours are properly documented and processed for potential reimbursement. It will also be responsible for follow-up on all financial issues through coordination with Kenton County Government and other local governments' fiscal and personnel management officials, Kentucky Division of Emergency Management fiscal



KENTON COUNTY EMERGENCY SUPPORT FUNCTION

agents, Federal Emergency Management Agency fiscal agents and directly with vendors as necessary.

Expenditures by other departments for activity not directly related to ESF-15/Public Information will be documented by those entities and submitted directly to the Finance/Administration Section as soon as possible.

Critiques

Following the conclusion of any significant emergency, incident or exercise, the primary agency representative will facilitate a critique of the group activities during the emergency/incident/exercise with the ESF-15/Public Information agencies, identifying the successes and identifying areas that can be strengthened and enhanced for efficiency in a continuous quality improvement process for the overall performance of the Kenton County Emergency Operations Center.

Statement of Concurrence PUBLIC INFORMATION ESF-15

The signature appearing below indicates the individual has the authority to commit resources of the agency represented and agrees to the functions and tasks prescribed for this ESF.

PRIMARY AGENCIES:

Kenton County Judge Executive, Mayor of Covington and Covington City Council members, Mayor of the Cities of Crescent Springs/Villa Hills, Mayor of Edgewood, Mayor of Elsmere, Mayor of Erlanger, Mayor of Fort Mitchell, Mayor of Fort Wright, Mayor of Independence, Mayor of Lakeside Park, Mayor of Ludlow, Mayor of Park Hills, Mayor of Ryland Heights and the Mayor of Taylor Mill, Kenton County Emergency Management Agency



KENTON COUNTY EMERGENCY SUPPORT FUNCTION

Kenton County Judge Executive (Signature) (Printed Name) (Date)

Mayor of Covington (Signature) (Printed Name) (Date)

Covington City Council Members (Signature) (Printed Name) (Date)

Mayor of Crescent Springs/Villa Hills (Signature) (Printed Name) (Date)

Mayor of Edgewood (Signature) (Printed Name) (Date)

Mayor of Elsmere (Signature) (Printed Name) (Date)

Mayor of Erlanger (Signature) (Printed Name) (Date)

Mayor of Ft. Mitchell (Signature) (Printed Name) (Date)

Mayor of Ft. Wright (Signature) (Printed Name) (Date)

Mayor of Independence (Signature) (Printed Name) (Date)

Mayor of Lakeside Park (Signature) (Printed Name) (Date)

Mayor of Ludlow (Signature) (Printed Name) (Date)

Mayor of Park Hills (Signature) (Printed Name) (Date)

Mayor of Ryland Heights (Signature) (Printed Name) (Date)



KENTON COUNTY EMERGENCY SUPPORT FUNCTION

Mayor of Taylor Mill (Signature) (Printed Name) (Date)

Kenton County Emergency Management Agency (Signature) (Printed Name) (Date)

(Signature) (Printed Name) (Date)

(Signature) (Printed Name) (Date)

THE REST OF THE PAGE IS LEFT BLANK



KENTON COUNTY EMERGENCY SUPPORT FUNCTION

SUPPORTING AGENCIES:

Kenton County Fiscal Court, Kenton County Sheriff's Office, Kenton County Road Department, Kenton County EMS, Kenton County Animal Control, Kenton County Detention Center, Kenton County Parks and Recreation Department, Bromley Fire Department, Covington Fire Department, Crescent Springs/Villa Hills Fire Department, Edgewood Fire Department, Elsmere Fire Department, Erlanger Fire Department, Fort Mitchell Fire Department, Fort Wright Fire Department, Independence Fire Department, Kenton Fire Department, Ludlow Fire Department, Park Hills Fire Department, Ryland Heights Fire Department, Taylor Mill Fire Department and the Kenton County Fire Chiefs Association.

City of Covington: Mayor of Covington and Covington City Council members, Covington Police Department, Covington Dispatch, Covington Code Enforcement, City of Covington School Board

Other Local Agencies:

Lakeside Park Police Department, Edgewood Police Department, Elsmere Police Department, Erlanger Police Department, Fort Wright Police Department, Independence Police Department, Kenton County Police Department, Kenton County Sheriff's Department, Ludlow Police Department, Park Hills Police Department, Taylor Mill Police Department, Villa Hills Police Department, Boone County Dispatch,

Campbell County Dispatch, Erlanger Dispatch Center, Kenton County Dispatch Center, Kenton County School Board, Kenton County School Resource Officer, Kenton County Jailer, American Red Cross (Cincinnati branch), Cincinnati Bell, FBI, Kenton County Department of Public Works, Cities of Covington, Crestview Hills, Crescent Springs, Elsmere, Erlanger, Fort Mitchell, Fort Wright, Independence, Taylor Mill, Park Hills, and Villa Hills Departments of Public Works, Northern Kentucky Independent Health District.

State Agencies Kentucky Division of Emergency Management