

Detailed Scope of Work

To: Eric Goodman
The Lusk Group
820 South Dixie Highway
Muldraugh, KY 40155
502-942-6966

From: Nick Hendrix
Kenton County

859-392-1920

Date Printed: December 13, 2022

Work Order Number: 110532.00

Work Order Title: Kenton County Administration Restrooms Renovation

Brief Scope: Renovate restrooms with new finishes on walls floors and ceilings. Replace counters, fixtures and accessories. New toilets to be auto-flush and faucets auto-on / off. Enlarge space for true HC accessible stalls, take from locker rooms. Drawings for construction only by contractor, no permits.

Preliminary

Revised

Final

The following items detail the scope of work as discussed at the site. All requirements necessary to accomplish the items set forth below shall be considered part of this scope of work.

Please see the attached Scope Letter and Drawings.

Contractor

Date

Owner

Date

Contractor's Price Proposal - Summary

Date: December 13, 2022
IQC Master Contract #: KY-NC-GC05-062420-LMC
Work Order Number: 110532.00
Owner PO #:
Work Order Title: Kenton County Administration Restrooms Renovation
Contractor: The Lusk Group
Proposal Name: Kenton County Administration Restrooms Renovation
Proposal Value: \$100,089.05

Category - Ceilings	\$10,726.27
Category - Electrical	\$1,805.07
Category - General Conditions.	\$4,057.84
Category - Painting	\$3,472.29
Category - Plumbing Fixtures	\$20,813.77
Category - Restroom Doors	\$1,595.00
Category - Restroom Partitions	\$16,836.46
Category - Restroom Renovation (Flooring)	\$22,776.96
Category - Restroom Specialties	\$3,314.81
Category - Restroom Wall Construction	\$3,802.86
Category - Waist Pipe Replacement	\$10,887.72
Proposal Total	\$100,089.05

This total represents the correct total for the proposal. Any discrepancy between line totals, sub-totals and the proposal total is due to rounding.

Contractor's Price Proposal - Detail

Date: December 13, 2022
IQC Master Contract #: KY-NC-GC05-062420-LMC
Work Order Number: 110532.00
Owner PO #:
Work Order Title: Kenton County Administration Restrooms Renovation
Contractor: The Lusk Group
Proposal Name: Kenton County Administration Restrooms Renovation
Proposal Value: \$100,089.05

Sect.	Item	Modifier.	UOM	Description	Line Total
Labor	Equip.	Material	(Excluded if marked with an X)		

Ceilings

1	01 95 26 00-0026		EA	AC Powered, Residential Smoke Alarm (Kidde i12020)	\$171.43
		X		Installation	Quantity: 3.00, Unit Price: 29.14, Factor: 1.3073, Total: \$114.28
		X		Demolition	Quantity: 3.00, Unit Price: 14.57, Factor: 1.3073, Total: \$57.14
				Remove and Replace existing Fire detection Units in Ceiling. Excludes Material	
2	09 51 13 00-0028		SF	2' x 2' x 1/2", Vinyl Faced, Gypsum Core Ceiling Panel	\$2,925.74
				Installation	Quantity: 600.00, Unit Price: 3.44, Factor: 1.3073, Total: \$2,698.27
				Demolition	Quantity: 600.00, Unit Price: 0.29, Factor: 1.3073, Total: \$227.47
				Restrooms & Locker Rooms only	
3	09 51 13 00-0028	0099		For Individual Room Quantities <495, AddFor use with projects >500 SF	\$368.66
				Installation	Quantity: 600.00, Unit Price: 0.47, Factor: 1.3073, Total: \$368.66
4	09 53 23 00-0004		SF	2' x 2' Grid, 15/16" T Bar Ceiling Suspension System	\$1,623.67
				Installation	Quantity: 600.00, Unit Price: 1.78, Factor: 1.3073, Total: \$1,396.20
				Demolition	Quantity: 600.00, Unit Price: 0.29, Factor: 1.3073, Total: \$227.47
				Restrooms & Locker Rooms only	
5	09 53 23 00-0004	0119		For Individual Room Quantities <495, AddFor use with projects >500 SF	\$149.03
				Installation	Quantity: 600.00, Unit Price: 0.19, Factor: 1.3073, Total: \$149.03
6	23 37 13 13-0178		EA	24" x 24" Removable/Reversible Core Register, Double Deflection, Radiused Aluminum Frame	\$4,920.55
				Installation	Quantity: 10.00, Unit Price: 363.76, Factor: 1.3073, Total: \$4,755.43
				Demolition	Quantity: 10.00, Unit Price: 12.63, Factor: 1.3073, Total: \$165.11
				New HVAC Registers & Returns throughout Space	
7	26 51 13 00-0002		EA	Removal And Reinstallation Of Lay-In Fluorescent Light Fixture	\$567.19
				Installation	Quantity: 7.00, Unit Price: 61.98, Factor: 1.3073, Total: \$567.19
				Existing Light Fixtures to Remain.	

Subtotal for Ceilings

\$10,726.27

Electrical

8	26 09 23 00-0356		EA	Dual Relay, Ultrasonic, Wall Switch Mounted Occupancy Sensor (Watt Stopper UW-200)	\$603.45
				Installation	Quantity: 4.00, Unit Price: 109.56, Factor: 1.3073, Total: \$572.91
				Demolition	Quantity: 4.00, Unit Price: 5.84, Factor: 1.3073, Total: \$30.54

Contractor's Price Proposal - Detail Continues..

Work Order Number: 110532.00
Work Order Title: Kenton County Administration Restrooms Renovation

Proposal Name: Kenton County Administration Restrooms Renovation
Proposal Value: \$100,089.05

Sect.	Item	Modifier.	UOM	Description	Line Total			
Labor	Equip.	Material	(Excluded if marked with an X)					
Electrical								
9	26 27 26 00-0006		EA	2 Gang, 15 Amp, NEMA 5-15, Duplex Receptacle Assembly	\$500.07			
				Quantity	Unit Price	Factor	=	Total
				4.00	69.12	1.3073	x	\$361.44
				4.00	26.51	1.3073	x	\$138.63
10	26 27 26 00-0138		EA	1 Gang, 20 Amp, 120/277 Volt, SPST, Switch Assembly	\$329.91			
				Quantity	Unit Price	Factor	=	Total
				3.00	61.97	1.3073	x	\$243.04
				3.00	22.15	1.3073	x	\$86.87
11	26 28 16 13-0008		EA	1 Pole GFI, 120/240 Volt, 15-30 Amp, UL Listed 30mA Equipment Protection Circuit Breaker, 10,000 Amp Interrupting Capacity	\$371.64			
				Quantity	Unit Price	Factor	=	Total
				2.00	129.32	1.3073	x	\$338.12
				2.00	12.82	1.3073	x	\$33.52
Subtotal for Electrical					\$1,805.07			
General Conditions.								
12	01 22 23 00-0156		MO	Up To 2,000 CFM Portable Negative Air Machine With Pre-Filter And HEPA Filter	\$2,562.18			
				Quantity	Unit Price	Factor	=	Total
				2.00	979.95	1.3073	x	\$2,562.18
				(2) Air Filters for (1) Month Rental.				
13	01 56 16 00-0002		SF	6 Mil, Plastic Sheeting, Applied To Floors	\$149.03			
				Quantity	Unit Price	Factor	=	Total
				600.00	0.19	1.3073	x	\$149.03
				Plastic Sheeting of Hallway as needed for Dust Protection				
14	01 74 19 00-0014		EA	20 CY Dumpster (5 Ton) "Construction Debris" Includes delivery of dumpster, rental cost, pick-up cost, hauling, and disposal fee. Non-hazardous material.	\$490.24			
				Quantity	Unit Price	Factor	=	Total
				1.00	375.00	1.3073	x	\$490.24
15	02 41 19 13-0335		EA	Core Drill Minimum Charge For projects where the total core drilling charge is less than the minimum charge, use task "Minimum Charge For Core Drilling" exclusively. Task "Minimum Charge For Core Drilling" should not be used in conjunction with any other tasks in this section. Does not apply to sections "Drilling In Concrete Per Inch Of Depth" or "Drilling In Brick Or Block Per Inch Of Depth".	\$624.94			
				Quantity	Unit Price	Factor	=	Total
				1.00	478.04	1.3073	x	\$624.94
				Core Drill for Electrical Conduit in relocated Walls.				
16	07 84 13 19-0004		EA	1-1/2" Diameter Hole With 3/4" Pipe, Sealed With Intumescent Firestop Sealant	\$228.73			
				Quantity	Unit Price	Factor	=	Total
				12.00	14.58	1.3073	x	\$228.73
				Seal Core Drilled Holes for Plumbing & Electrical.				

Contractor's Price Proposal - Detail Continues..

Work Order Number: 110532.00
Work Order Title: Kenton County Administration Restrooms Renovation

Proposal Name: Kenton County Administration Restrooms Renovation
 Proposal Value: \$100,089.05

Sect.	Item	Modifier.	UOM	Description	Line Total
Labor	Equip.	Material	(Excluded if marked with an X)		

General Conditions.

17	07 84 13 19-0004	0089		For Intumescent Sealant For Plastic Pipe, Add	\$2.72		
			Installation	Quantity 8.00 x	Unit Price 0.26 x	Factor 1.3073 =	Total \$2.72

Subtotal for General Conditions. \$4,057.84

Painting

18	09 91 23 00-0062		SF	Paint Interior Plaster/Drywall Walls, 1 Coat Primer, Brush/Roller Work	\$1,108.80		
			Installation	Quantity 2,232.00 x	Unit Price 0.38 x	Factor 1.3073 =	Total \$1,108.80
				248'x9'=2,232'sf			

19	09 91 23 00-0062	0254		For Oil Based Paint, Add	\$58.36		
			Installation	Quantity 2,232.00 x	Unit Price 0.02 x	Factor 1.3073 =	Total \$58.36
				Epoxy Based Paint			

20	09 91 23 00-0064		SF	Paint Interior Plaster/Drywall Walls, 2 Coats Paint, Brush/Roller Work	\$2,159.24		
			Installation	Quantity 2,232.00 x	Unit Price 0.74 x	Factor 1.3073 =	Total \$2,159.24
				248'x9'=2,232'sf			

21	09 91 23 00-0064	0254		For Oil Based Paint, Add	\$145.89		
			Installation	Quantity 2,232.00 x	Unit Price 0.05 x	Factor 1.3073 =	Total \$145.89
				Epoxy base Paint			

Subtotal for Painting \$3,472.29

Plumbing Fixtures

22	22 13 13 00-0042		EA	Floor Mounted Water Closet, Single Fixture Rough-In, Polyvinyl Chloride (PVC) Waste And Vent PipeIncludes polyvinyl chloride (PVC) waste and vent pipe and copper domestic supply. Excludes fixture and flush valve.	\$1,588.06		
			Installation	Quantity 4.00 x	Unit Price 303.69 x	Factor 1.3073 =	Total \$1,588.06

23	22 13 13 00-0045		EA	Wall Mounted Urinal, Single Fixture Rough-In, Polyvinyl Chloride (PVC) Waste And Vent PipeIncludes polyvinyl chloride (PVC) waste and vent pipe and copper domestic supply. Excludes fixture, carrier and flush valve.	\$224.36		
			Installation	Quantity 1.00 x	Unit Price 171.62 x	Factor 1.3073 =	Total \$224.36

24	22 13 13 00-0046		EA	Wall Mounted Lavatory, Single Fixture Rough-In, Polyvinyl Chloride (PVC) Waste And Vent PipeIncludes polyvinyl chloride (PVC) waste and vent pipe and copper domestic supply. Excludes fixture, carrier and faucet.	\$786.97		
			Installation	Quantity 3.00 x	Unit Price 200.66 x	Factor 1.3073 =	Total \$786.97

Contractor's Price Proposal - Detail Continues..

Work Order Number: 110532.00
Work Order Title: Kenton County Administration Restrooms Renovation

Proposal Name: Kenton County Administration Restrooms Renovation
 Proposal Value: \$100,089.05

Sect.	Item	Modifier	UOM	Description	Line Total			
Labor	Equip.	Material	(Excluded if marked with an X)					
Plumbing Fixtures								
25	22 42 13 13-0005		EA	Flush Valve Type, Siphon Jet, Floor Mounted, Wall Outlet, Elongated Vitreous China Water Closet (American Standard Priolo®)	\$1,514.04			
				Quantity	Unit Price	Factor	=	Total
	Installation	2.00	x	579.07	x	1.3073	=	\$1,514.04
	Flush Valve Type Water Closet							
26	22 42 13 13-0006		EA	2 Piece Tank Type, Pressure Assisted, Siphon Jet, Floor Mounted, Wall Outlet, Elongated Vitreous China Water Closet (American Standard Yorkville™)	\$338.28			
				Quantity	Unit Price	Factor	=	Total
	Installation	0.00	x	803.98	x	1.3073	=	\$0.00
	Demolition	4.00	x	64.69	x	1.3073	=	\$338.28
	Demo existing Tank Type Water Closets							
27	22 42 13 13-0024		EA	Flush Valve Type, Siphon Jet, Floor Mounted, Wall Outlet, Handicap Accessible, Elongated Vitreous China Water Closet (American Standard Huron)	\$1,657.42			
				Quantity	Unit Price	Factor	=	Total
	Installation	2.00	x	633.91	x	1.3073	=	\$1,657.42
	ADA Flush Valve Type Water Closet							
28	22 42 13 16-0004		EA	Washout, Wall Hung, Vitreous China Urinal With Top Spud (American Standard Washbrook®)	\$636.72			
				Quantity	Unit Price	Factor	=	Total
	Installation	1.00	x	420.49	x	1.3073	=	\$549.71
	Demolition	1.00	x	66.56	x	1.3073	=	\$87.01
29	22 42 16 13-0005		EA	22" x 19" Porcelain Enameled Cast Iron Wall Hung Lavatory (Kohler® Hampton™)	\$2,546.76			
				Quantity	Unit Price	Factor	=	Total
	Installation	3.00	x	607.70	x	1.3073	=	\$2,383.34
	Demolition	3.00	x	41.67	x	1.3073	=	\$163.43
	American Standard Lucerne Wall Hung Model.							
30	22 42 39 00-0144		EA	Solar Powered, Electronic Lavatory Faucet With Integral Mixing Valve (Sloan Solis EAF-275-ISM)	\$3,257.14			
				Quantity	Unit Price	Factor	=	Total
	Installation	3.00	x	778.62	x	1.3073	=	\$3,053.67
	Demolition	3.00	x	51.88	x	1.3073	=	\$203.47
31	22 42 43 00-0010		EA	Exposed Battery Powered Water Closet Flush Valve (Sloan G2 Optima Plus 8113)	\$3,047.53			
				Quantity	Unit Price	Factor	=	Total
	Installation	4.00	x	582.79	x	1.3073	=	\$3,047.53
	Water Closet Flush Valves							
32	22 42 43 00-0040		EA	Exposed Battery Powered Urinal Flush Valve, Top Spud (Sloan G2 Opt 8180)1.0, 1.5 or 3.5 GPF.	\$667.86			
				Quantity	Unit Price	Factor	=	Total
	Installation	1.00	x	489.66	x	1.3073	=	\$640.13
	Demolition	1.00	x	21.21	x	1.3073	=	\$27.73

Contractor's Price Proposal - Detail Continues..

Work Order Number: 110532.00
Work Order Title: Kenton County Administration Restrooms Renovation

Proposal Name: Kenton County Administration Restrooms Renovation
Proposal Value: \$100,089.05

Sect.	Item	Modifier	UOM	Description	Line Total
Labor	Equip.	Material	(Excluded if marked with an X)		

Plumbing Fixtures

33	22 47 13 00-0006		EA	Stainless Steel, Extended Length, Semi-Circular With Back Panel Indoor Drinking Fountain With Bubbler, 180 Degree Push Bar (Halsey-Taylor OVL-II-EBP)	\$3,059.97			
				Quantity	Unit Price	Factor	=	Total
			Installation	1.00	x 2,231.82	x 1.3073	=	\$2,917.66
			Demolition	1.00	x 108.86	x 1.3073	=	\$142.31
				New Drinking Fountain with Bottle Filling Station. Model EI Kay EZ58WSLK.				
34	22 47 19 00-0010		EA	Indoor Bottle Filling Station, Surface Mount (Halsey Taylor HTHBSM-WF)	\$1,488.66			
				Quantity	Unit Price	Factor	=	Total
			Installation	1.00	x 1,138.73	x 1.3073	=	\$1,488.66
				New Drinking Fountain with Bottle Filling Station. Model EI Kay EZ58WSLK.				

Subtotal for Plumbing Fixtures **\$20,813.77**

Restroom Doors

35	08 12 13 13-0008		EA	3' x 6'-8" Through 7'-2" High, 4-3/4" Deep, 16 Gauge, Knock Down Hollow Metal Door Frame	\$151.80			
				Quantity	Unit Price	Factor	=	Total
			Installation	0.00	x 315.01	x 1.3073	=	\$0.00
			Demolition	2.00	x 58.06	x 1.3073	=	\$151.80
				Demo Door Frames for relocation of Walls. Required for ADA compliance.				
36	08 12 13 13-0182		LF	4-3/4" x 2", 16 Gauge, Hollow Metal Frame Vertical Mullion	\$1,266.77			
				Quantity	Unit Price	Factor	=	Total
			Installation	34.00	x 28.50	x 1.3073	=	\$1,266.77
				Cased Opening where Doors were removed.				
37	08 13 13 13-0018		EA	3' x 7' x 1-3/4", 20 Gauge, Unrated, Hollow Metal Door	\$91.09			
				Quantity	Unit Price	Factor	=	Total
			Installation	0.00	x 553.85	x 1.3073	=	\$0.00
			Demolition	2.00	x 34.84	x 1.3073	=	\$91.09
				Demo Doors for relocation of Walls. Required for ADA compliance.				
38	09 91 23 00-0239		LF	Paint Interior Metal Door Frame And Trim, 1 Coat Primer, Brush/Roller Work	\$25.78			
				Quantity	Unit Price	Factor	=	Total
			Installation	34.00	x 0.58	x 1.3073	=	\$25.78
39	09 91 23 00-0239	0282		For Oil Based Paint, Add	\$1.33			
				Quantity	Unit Price	Factor	=	Total
			Installation	34.00	x 0.03	x 1.3073	=	\$1.33
40	09 91 23 00-0241		LF	Paint Interior Metal Door Frame And Trim, 2 Coats Paint, Brush/Roller Work	\$55.12			
				Quantity	Unit Price	Factor	=	Total
			Installation	34.00	x 1.24	x 1.3073	=	\$55.12
41	09 91 23 00-0241	0282		For Oil Based Paint, Add	\$3.11			
				Quantity	Unit Price	Factor	=	Total
			Installation	34.00	x 0.07	x 1.3073	=	\$3.11

Subtotal for Restroom Doors **\$1,595.00**

Contractor's Price Proposal - Detail Continues..

Work Order Number: 110532.00
Work Order Title: Kenton County Administration Restrooms Renovation

Proposal Name: Kenton County Administration Restrooms Renovation
 Proposal Value: \$100,089.05

Sect.	Item	Modifier	UOM	Description	Line Total				
Labor	Equip.	Material	(Excluded if marked with an X)						
Restroom Partitions									
42	10 21 13 19-0004		EA	36" x 60", Overhead Braced, Recycled Solid Plastic (HDPE), One Compartment Corner Unit, Complete Toilet Partition	\$3,415.64				
				Quantity	Unit Price	Factor	=	Total	
			Installation	2.00	x	1,226.54	x	1.3073	\$3,206.91
			Demolition	2.00	x	79.83	x	1.3073	\$208.72
43	10 21 13 19-0004	0176		For Heavy Gauge Full-Height SS Hinges And Brackets, Add	\$476.93				
				Quantity	Unit Price	Factor	=	Total	
			Installation	2.00	x	182.41	x	1.3073	\$476.93
44	10 21 13 19-0004	0182		For NFPA Class A, Add	\$1,729.45				
				Quantity	Unit Price	Factor	=	Total	
			Installation	2.00	x	661.46	x	1.3073	\$1,729.45
45	10 21 13 19-0006		EA	60" x 78", Overhead Braced, Recycled Solid Plastic (HDPE), One Compartment Corner Unit, Complete ADA Compliant Toilet Partition	\$4,644.99				
				Quantity	Unit Price	Factor	=	Total	
			Installation	2.00	x	1,688.02	x	1.3073	\$4,413.50
			Demolition	2.00	x	88.54	x	1.3073	\$231.50
46	10 21 13 19-0006	0176		For Heavy Gauge Full-Height SS Hinges And Brackets, Add	\$476.93				
				Quantity	Unit Price	Factor	=	Total	
			Installation	2.00	x	182.41	x	1.3073	\$476.93
47	10 21 13 19-0006	0182		For NFPA Class A, Add	\$2,449.31				
				Quantity	Unit Price	Factor	=	Total	
			Installation	2.00	x	936.78	x	1.3073	\$2,449.30
48	10 21 13 19-0031		EA	30" x 55" x 1", Recycled Solid Plastic (HDPE), Toilet Partition Door	\$950.64				
				Quantity	Unit Price	Factor	=	Total	
			Installation	2.00	x	350.53	x	1.3073	\$916.50
			Demolition	2.00	x	13.06	x	1.3073	\$34.15
49	10 21 13 19-0031	0177		For Heavy Gauge Full-Height SS Hinge, Add	\$212.65				
				Quantity	Unit Price	Factor	=	Total	
			Installation	2.00	x	81.33	x	1.3073	\$212.65
50	10 21 13 19-0031	0182		For NFPA Class A, Add	\$525.87				
				Quantity	Unit Price	Factor	=	Total	
			Installation	2.00	x	201.13	x	1.3073	\$525.87
51	10 21 13 19-0033		EA	36" x 55" x 1", Recycled Solid Plastic (HDPE), ADA Compliant Toilet Partition Door	\$1,114.16				
				Quantity	Unit Price	Factor	=	Total	
			Installation	2.00	x	413.07	x	1.3073	\$1,080.01
			Demolition	2.00	x	13.06	x	1.3073	\$34.15
52	10 21 13 19-0033	0177		For Heavy Gauge Full-Height SS Hinge, Add	\$212.65				
				Quantity	Unit Price	Factor	=	Total	
			Installation	2.00	x	81.33	x	1.3073	\$212.65
53	10 21 13 19-0033	0182		For NFPA Class A, Add	\$627.24				
				Quantity	Unit Price	Factor	=	Total	
			Installation	2.00	x	239.90	x	1.3073	\$627.24

Contractor's Price Proposal - Detail Continues..

Work Order Number: 110532.00
Work Order Title: Kenton County Administration Restrooms Renovation

Proposal Name: Kenton County Administration Restrooms Renovation
Proposal Value: \$100,089.05

Sect.	Item	Modifier.	UOM	Description	Line Total
Labor	Equip.	Material	(Excluded if marked with an X)		
Subtotal for Restroom Partitions					\$16,836.46

Restroom Renovation (Flooring)

54	09 30 13 00-0003	SF		Less Than 8" x 8" Mounted Floor TileIncludes glazed porcelain, unglazed porcelain and glazed ceramic tiles. Tiles mounted from back, side or front in 12" x 12", 12" x 24", or similar sized sheets.	\$988.32	
			Quantity	Unit Price	Factor	Total
	Installation		0.00	8.98	1.3073	\$0.00
	Demolition		600.00	1.26	1.3073	\$988.32
	Removal of existing Ceramic Floor Tile.					
55	09 30 13 00-0004	SF		8" x 8" And Larger Unmounted Floor TileIncludes glazed porcelain, unglazed porcelain and glazed ceramic tiles.	\$7,530.05	
			Quantity	Unit Price	Factor	Total
	Installation		600.00	9.60	1.3073	\$7,530.05
56	09 30 13 00-0008	SF		8" x 8" And Larger Unmounted Wall TileIncludes glazed porcelain, unglazed porcelain and glazed ceramic tiles.	\$4,928.26	
			Quantity	Unit Price	Factor	Total
	Installation		366.00	10.30	1.3073	\$4,928.26
	6' High Wall Tile on Wet Walls Urinal Screen Wall, and Adjacent to Wet Walls. 61'x6'=366'sf					
57	09 30 13 00-0012	LF		4-1/4" To 4-1/2" High Glazed Porcelain, Unglazed Porcelain And Glazed Ceramic Cove Base Or Trim	\$2,719.26	
			Quantity	Unit Price	Factor	Total
	Installation		307.00	5.98	1.3073	\$2,400.02
	Demolition		222.00	1.10	1.3073	\$319.24
	Removal of existing Ceramic Wall Base and installation of new CB-2 Wall Base. Includes Bull Nose on Top, and Corners.					
58	09 32 13 00-0003	SF		1-1/4" Minimum Thickness Portland Cement Mortar Setting BedFor commercial floors. Includes 15 LB felt and wire reinforcement.	\$3,529.71	
			Quantity	Unit Price	Factor	Total
	Installation		600.00	3.38	1.3073	\$2,651.20
	Demolition		600.00	1.12	1.3073	\$878.51
	Setting Bed for Floor Tile					
59	09 32 13 00-0004	SF		3/4" Portland Cement Plaster Scratch Coat for WallsIncludes 15 LB felt and expanded metal lath.	\$3,081.36	
			Quantity	Unit Price	Factor	Total
	Installation		366.00	6.44	1.3073	\$3,081.36
	Scratch Coat for Walls. 6' High Wall Tile on Wet Walls Urinal Screen Wall, and Adjacent to Wet Walls. 61'x6'=366'sf					

Subtotal for Restroom Renovation (Flooring)					\$22,776.96
--	--	--	--	--	--------------------

Restroom Specialties

60	10 28 13 13-0044	EA		Two Roll, Recessed Mounted, Stainless Steel Toilet Tissue Dispenser (Bobrick Classic B-3888)	\$676.50	
			Quantity	Unit Price	Factor	Total
	Installation		4.00	116.32	1.3073	\$608.26
	Demolition		4.00	13.05	1.3073	\$68.24

Contractor's Price Proposal - Detail Continues..

Work Order Number: 110532.00
Work Order Title: Kenton County Administration Restrooms Renovation

Proposal Name: Kenton County Administration Restrooms Renovation
 Proposal Value: \$100,089.05

Sect.	Item	Modifier	UOM	Description	Line Total
Labor	Equip.	Material	(Excluded if marked with an X)		
Restroom Specialties					
61	10 28 13 13-0063		EA	800 ml, Lavatory Mounted, Chrome Plated Automatic Soap Dispenser (Bobrick B-826.18)Includes start-up kit.	\$117.58
		X		Installation	
		X		Demolition	
				Remove and reinstall existing Soap Dispenser. Excludes Material.	
				Quantity	Unit Price
				Factor	Total
				2.00 x	31.92 x
				1.3073 =	\$83.46
				2.00 x	13.05 x
				1.3073 =	\$34.12
62	10 28 13 13-0132		EA	24" x 36", Two Wall, 1-1/4" Diameter, Stainless Steel Grab Bar (Bobrick B-58616)	\$343.64
				Installation	
				Demolition	
				Quantity	Unit Price
				Factor	Total
				2.00 x	119.82 x
				1.3073 =	\$313.28
				2.00 x	11.61 x
				1.3073 =	\$30.36
63	10 28 13 13-0317		EA	24" x 30", Surface Mounted, Stainless Steel Channel Frame Glass Mirror (Bobrick B-165 2430)	\$453.45
				Installation	
				Demolition	
				Quantity	Unit Price
				Factor	Total
				3.00 x	101.12 x
				1.3073 =	\$396.58
				3.00 x	14.50 x
				1.3073 =	\$56.87
64	10 51 13 00-0009		EA	12" x 12" x 72" Single Tier Institutional Or Corridor Locker	\$1,723.64
		X		Installation	
		X		Demolition	
				Quantity	Unit Price
				Factor	Total
				23.00 x	37.14 x
				1.3073 =	\$1,116.72
				25.00 x	18.57 x
				1.3073 =	\$606.91
				Remove (13) Lockers, reinstall 10. Excludes Material	
Subtotal for Restroom Specialties					\$3,314.81
Restroom Wall Construction					
65	07 73 00 00-0019		SF	5/8" Thick, Fiberglass Mat Faced, Moisture Resistant Gypsum Core, Roof Protection Board (Georgia-Pacific DensDeck®), Mechanically Fastened	\$995.22
				Installation	
				Quantity	Unit Price
				Factor	Total
				366.00 x	2.08 x
				1.3073 =	\$995.22
				Cement Board for Wall Tile. 61'x6'=366'	
66	07 73 00 00-0019	0164		For Mechanically Fastened To Gypsum, Add	\$406.70
				Installation	
				Quantity	Unit Price
				Factor	Total
				366.00 x	0.85 x
				1.3073 =	\$406.70
67	09 01 20 91-0003		SF	>2 To 4 SF, Cut And Patch Hole In Gypsum Board To Match ExistingPer location.	\$251.32
				Installation	
				Quantity	Unit Price
				Factor	Total
				24.00 x	8.01 x
				1.3073 =	\$251.32
				Cut and Patch (6) Location for Rough-ins. 2'x2'x6EA=24'sf	
68	09 22 16 13-0010		SF	3-5/8" Width, 16" On Center, 20 Gauge, Non Load Bearing, Non Structural, Galvanized Steel Stud Framing With Tracks And Runners	\$845.56
				Installation	
				Quantity	Unit Price
				Factor	Total
				308.00 x	2.10 x
				1.3073 =	\$845.56
				22'x12'=308'sf	
69	09 29 10 00-0006		SF	5/8" Gypsum Board	\$885.83
				Installation	
				Quantity	Unit Price
				Factor	Total
				616.00 x	1.10 x
				1.3073 =	\$885.83
				308 x (2) Sides	

Contractor's Price Proposal - Detail Continues..

Work Order Number: 110532.00
Work Order Title: Kenton County Administration Restrooms Renovation

Proposal Name: Kenton County Administration Restrooms Renovation
 Proposal Value: \$100,089.05

Sect.	Item	Modifier.	UOM	Description	Line Total
Labor	Equip.	Material	(Excluded if marked with an X)		

Restroom Wall Construction

70	09 29 10 00-0049		SF	Up To 10' High, Walls, Tape, Spackle And Finish Gypsum Board	\$338.22
				Installation	
				Quantity	Unit Price
				616.00	0.42
				x	x
					Factor =
					1.3073
					Total
					\$338.22
				308 x (2) Sides	
71	09 29 10 00-0055		LF	Up To 10' High, Vertical Corners, Tape, Spackle And Finish Gypsum Board	\$80.01
				Installation	
				Quantity	Unit Price
				72.00	0.85
				x	x
					Factor =
					1.3073
					Total
					\$80.01
				(6) EA x 12'=72'	

Subtotal for Restroom Wall Construction **\$3,802.86**

Waist Pipe Replacement

72	22 13 16 00-0011		LF	1-1/2" Aboveground No Hub Cast Iron Soil Pipe AssemblyIncludes all fittings , couplings and hangers. Fittings are assumed every 10'. Not for use where detail is available.	\$195.05
				Installation	
				Quantity	Unit Price
				0.00	19.14
				x	x
					Factor =
					1.3073
					Total
					\$0.00
				Demolition	
				Quantity	Unit Price
				40.00	3.73
				x	x
					Factor =
					1.3073
					Total
					\$195.05
73	22 13 16 00-0012		LF	2" Aboveground No Hub Cast Iron Soil Pipe AssemblyIncludes all fittings , couplings and hangers. Fittings are assumed every 10'. Not for use where detail is available.	\$208.12
				Installation	
				Quantity	Unit Price
				0.00	20.28
				x	x
					Factor =
					1.3073
					Total
					\$0.00
				Demolition	
				Quantity	Unit Price
				40.00	3.98
				x	x
					Factor =
					1.3073
					Total
					\$208.12
74	22 13 16 00-0013		LF	3" Aboveground No Hub Cast Iron Soil Pipe AssemblyIncludes all fittings , couplings and hangers. Fittings are assumed every 10'. Not for use where detail is available.	\$302.25
				Installation	
				Quantity	Unit Price
				0.00	26.20
				x	x
					Factor =
					1.3073
					Total
					\$0.00
				Demolition	
				Quantity	Unit Price
				40.00	5.78
				x	x
					Factor =
					1.3073
					Total
					\$302.25
75	22 13 16 00-0506		LF	1-1/2" Schedule 40 Polyvinyl Chloride (PVC) DWV Pipe AssemblyIncludes all fittings, couplings and hangers. Fittings are assumed every 10'. Not for use where detail is available.	\$1,120.09
				Installation	
				Quantity	Unit Price
				60.00	14.28
				x	x
					Factor =
					1.3073
					Total
					\$1,120.09
76	22 13 16 00-0507		LF	2" Schedule 40 Polyvinyl Chloride (PVC) DWV Pipe AssemblyIncludes all fittings, couplings and hangers. Fittings are assumed every 10'. Not for use where detail is available.	\$1,248.73
				Installation	
				Quantity	Unit Price
				60.00	15.92
				x	x
					Factor =
					1.3073
					Total
					\$1,248.73
77	22 13 16 00-0508		LF	3" Schedule 40 Polyvinyl Chloride (PVC) DWV Pipe AssemblyIncludes all fittings, couplings and hangers. Fittings are assumed every 10'. Not for use where detail is available.	\$1,730.34
				Installation	
				Quantity	Unit Price
				60.00	22.06
				x	x
					Factor =
					1.3073
					Total
					\$1,730.34

Contractor's Price Proposal - Detail Continues..

Work Order Number: 110532.00
Work Order Title: Kenton County Administration Restrooms Renovation

Proposal Name: Kenton County Administration Restrooms Renovation
Proposal Value: \$100,089.05

Sect.	Item	Modifier	UOM	Description	Line Total			
Labor	Equip.	Material	(Excluded if marked with an X)					
Waist Pipe Replacement								
78	22 13 16 00-0599		EA	2" Polyvinyl Chloride (PVC) DWV P-Traps	\$415.51			
				Quantity	Unit Price	Factor	=	Total
				8.00	39.73	1.3073		\$415.51
				Installation x x x				
				Traps for (1) Water Cooler, (3) Sinks, (3) Showers, and (1) Urinal.				
79	22 13 16 00-0601		EA	4" Polyvinyl Chloride (PVC) DWV P-Traps	\$855.97			
				Quantity	Unit Price	Factor	=	Total
				4.00	163.69	1.3073		\$855.97
				Installation x x x				
				Traps for (4) Water Closets				
80	22 13 16 00-0682		EA	3" Polyvinyl Chloride (PVC) DWV Cleanout Adapters With Plug	\$164.17			
				Quantity	Unit Price	Factor	=	Total
				3.00	41.86	1.3073		\$164.17
				Installation x x x				
				New Clean-out in Plastic.				
81	22 13 16 00-0701		EA	1-1/2", Cut And Prepare Existing Polyvinyl Chloride (PVC) DWV Pipe	\$17.88			
				Quantity	Unit Price	Factor	=	Total
				3.00	4.56	1.3073		\$17.88
				Installation x x x				
82	22 13 16 00-0702		EA	2", Cut And Prepare Existing Polyvinyl Chloride (PVC) DWV Pipe	\$19.65			
				Quantity	Unit Price	Factor	=	Total
				3.00	5.01	1.3073		\$19.65
				Installation x x x				
83	22 13 16 00-0703		EA	3", Cut And Prepare Existing Polyvinyl Chloride (PVC) DWV Pipe	\$25.02			
				Quantity	Unit Price	Factor	=	Total
				3.00	6.38	1.3073		\$25.02
				Installation x x x				
84	22 13 16 00-0866		EA	3" Cast Iron/Plastic To Cast Iron/Plastic, Elastomeric Flexible Pipe Coupling (Femco 1056-33)	\$19.53			
				Quantity	Unit Price	Factor	=	Total
				1.00	14.94	1.3073		\$19.53
				Installation x x x				
				Tie-in to existing Cast Iron Pipe at Ground Floor.				
85	22 42 13 13-0057		EA	Vertical Adjustable On Stack, Hub And Spigot, Double Water Closet (Back To Back) Carrier	\$3,353.38			
				Quantity	Unit Price	Factor	=	Total
				2.00	1,282.56	1.3073		\$3,353.38
				Installation x x x				
				Adjustable Vent Stack Rack for (4) Water Closets.				
86	22 42 13 13-0057	0130	EA	For Carrier For Floor Mounted, Back Outlet China Bowls, Deduct	-\$279.76			
				Quantity	Unit Price	Factor	=	Total
				2.00	-107.00	1.3073		-\$279.76
				Installation x x x				
87	22 42 13 13-0057	0142	EA	For Positioning Frame, Add	\$188.57			
				Quantity	Unit Price	Factor	=	Total
				2.00	72.12	1.3073		\$188.56
				Installation x x x				
88	22 42 13 13-0057	0144	EA	For Supply Pipe Support, Add	\$192.75			
				Quantity	Unit Price	Factor	=	Total
				2.00	73.72	1.3073		\$192.75
				Installation x x x				

Contractor's Price Proposal - Detail Continues..

Work Order Number: 110532.00
Work Order Title: Kenton County Administration Restrooms Renovation

Proposal Name: Kenton County Administration Restrooms Renovation
Proposal Value: \$100,089.05

Sect.	Item	Modifer.	UOM	Description	Line Total
Labor	Equip.	Material	(Excluded if marked with an X)		

Waist Pipe Replacement

89	22 42 13 13-0057	0166	EA	For Carrier For Wide Chase Installations, Add	\$1,110.47
				Installation	
				Quantity	
				Unit Price	
				Factor	
				=	
				Total	\$1,110.47
				2.00 x	
				424.72 x	

Subtotal for Waist Pipe Replacement **\$10,887.72**

Proposal Total **\$100,089.05**

This total represents the correct total for the proposal. Any discrepancy between line totals, sub-totals and the proposal total is due to rounding.

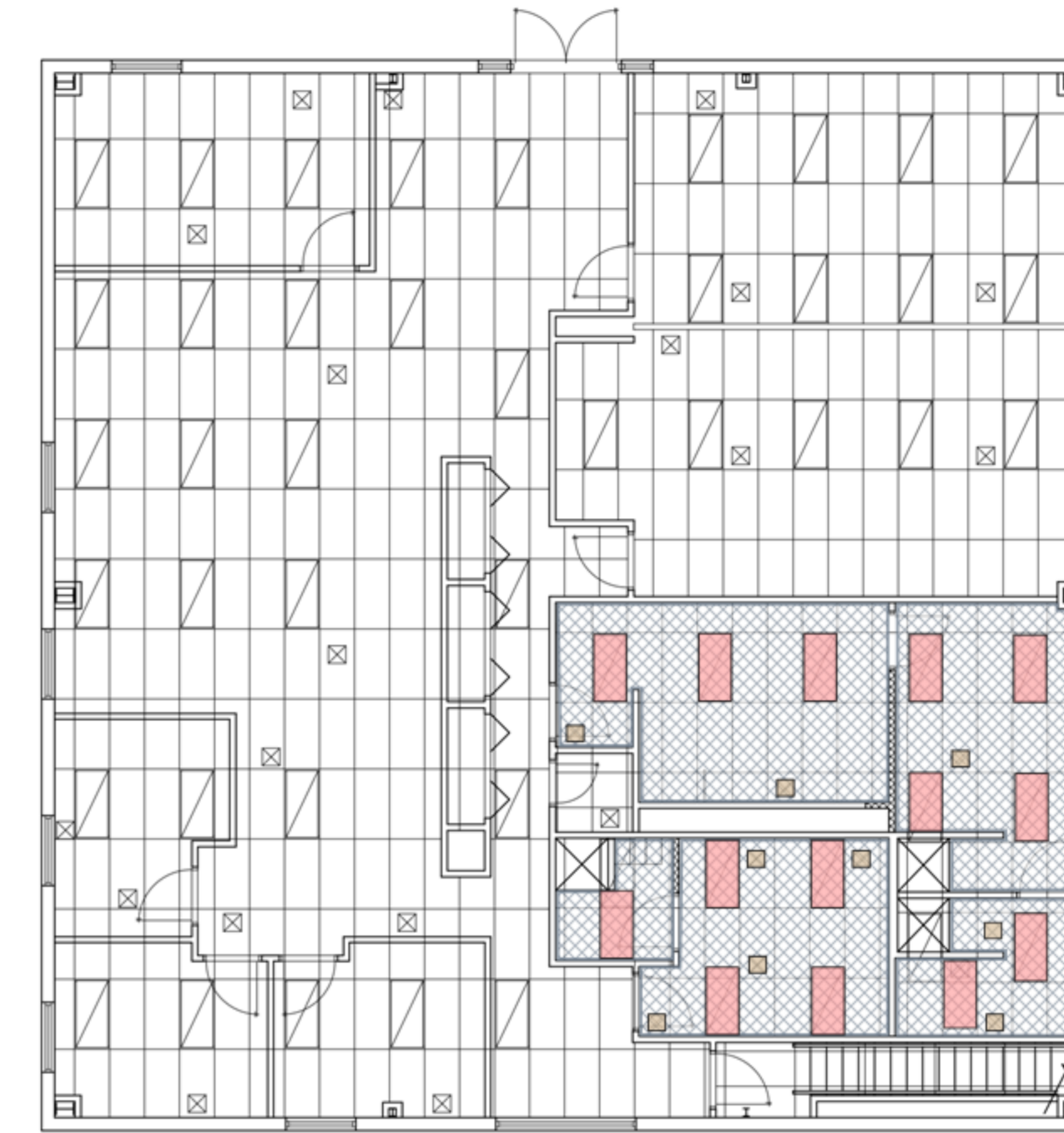
WALL TYPE LEGEND	
DESCRIPTION	SYMBOL
EXISTING MASONRY	
EXISTING FRAMED WALL	
NEW FRAMED WALL	
DEMO	

Legend

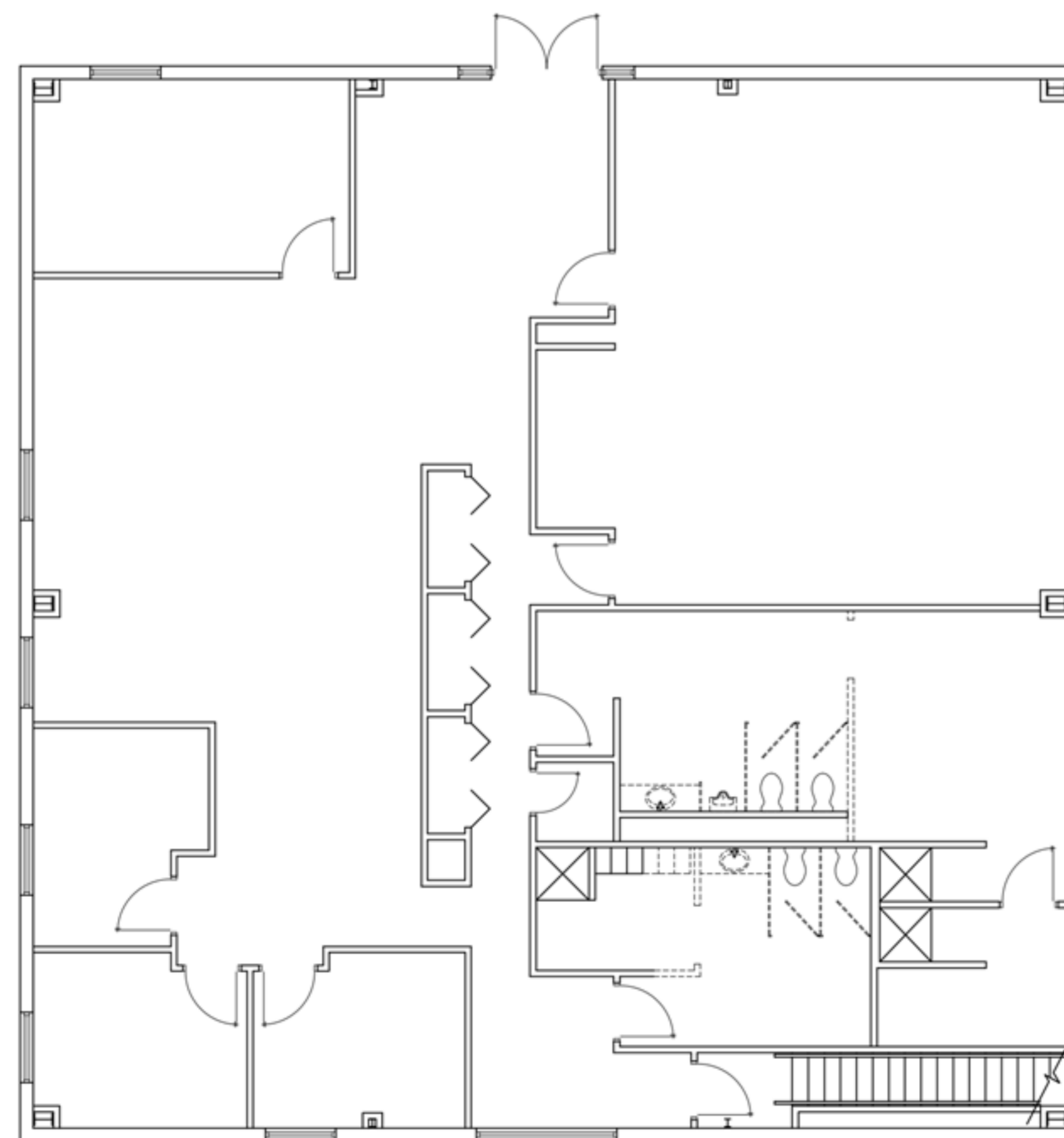
	Acoustical Ceiling	601.1 ft²
	Suspended acoustical ceiling	
	24 x 48 tiles	76 ea
	Wall angle	246' 8-15/16"
	Main tee	152' 8-1/2"
	4 ft. cross tee	305' 7-1/4"
	Anchors	36 ea
	Ceramic Floor Tile	600.8 ft²
	Floor tiles	
	Ceramic tiles	601 ea
	Ceramic Wall Base	221' 8-1/8"
	Ceramic Wall Tile	26' 1-11/16"
	Waist Vent Piping.	120' 3-15/16"
	Wall Paint	247' 10-15/16"
	Ceramic Threshold	4 Units
	Employee Locker	25 Units
	Register/Return	9 Units
	Troffer Lights	14 Units

CEILING LEDGEND LEGEND	
DESCRIPTION	SYMBOL
2x4 LIGHT	
DIFFUSER	

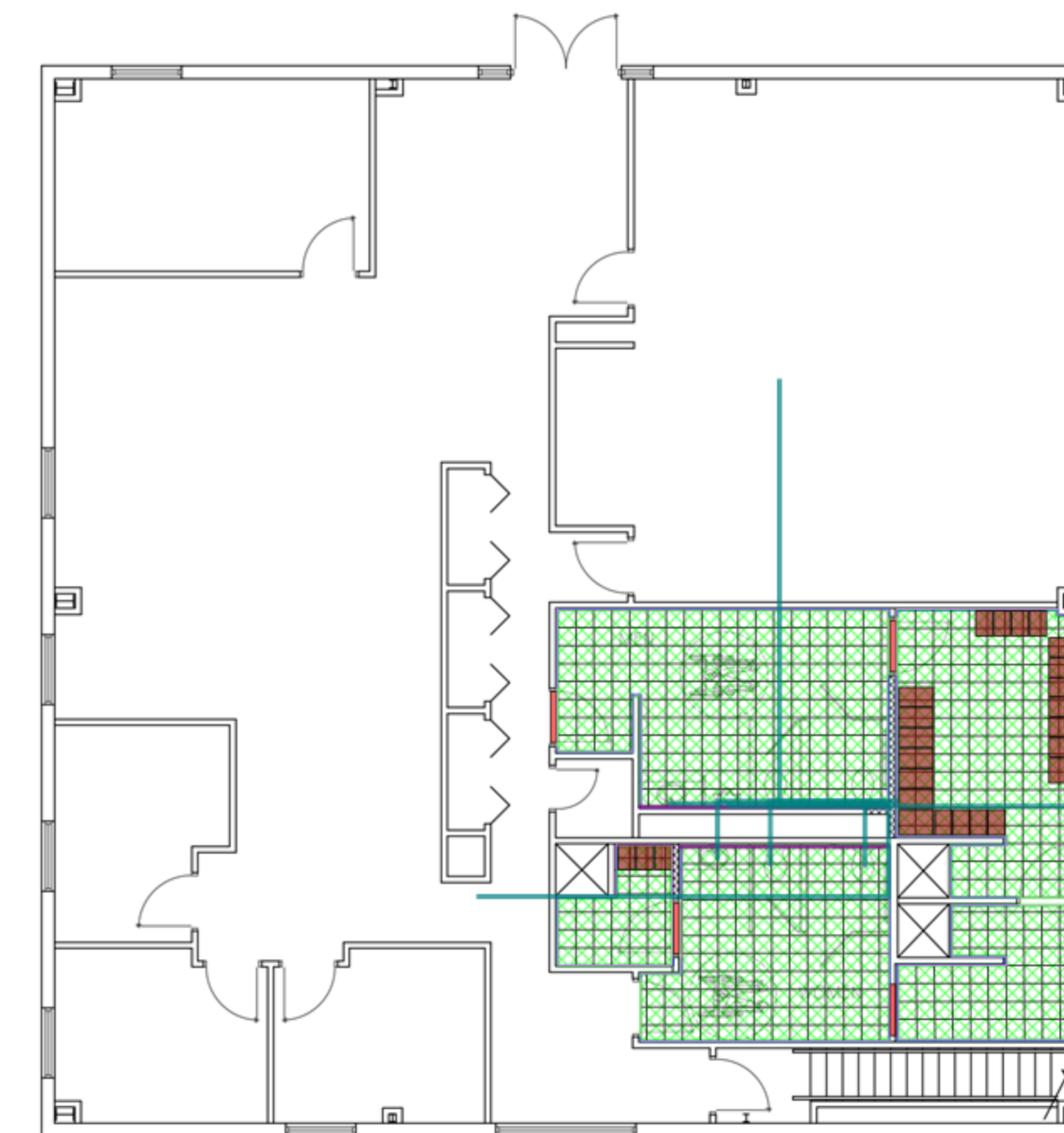
INSTALL NEW WHERE SYMBOL SHOWN
UNLESS NOTED BY EXG.



3 CEILING PLAN
Scale: 1/8"=1'



1 DEMO PLAN
Scale: 1/8"=1'



2 PROPOSED PLAN
Scale: 1/8"=1'



DATE	DESCRIPTION	PROJECT NUMBER
11-3-22	1 SET FOR CONSTRUCTION	
	FOR CONSTRUCTION	
	AS BUILT	

DATE	DESCRIPTION	PROJECT NUMBER

SHEET DESCRIPTION:	FLOOR PLANS - DEMO AND PROPOSED
PROJECT DESCRIPTION & LOCATION:	KENTON COUNTY FISCAL COURT INDEPENDENCE, KY

DRAWN BY:	M. RAINER
APPROVED BY:	
DATE:	11-3-22
LUSK JOB #	
SCALE:	AS INDICATED
SHEET NUMBER:	A1.0
	SHEET - OF -



The Lusk Group

820 South Dixie Hwy Muldraugh, KY 40155

Tel 502 942 6966 Fax 502 942 6964

Nicholas Hendrix, P.E.

County Engineer/Director of Public Works

Kenton County

420 Independence Station Road

Independence, KY 41051

P: 859-392-1920

Re: Kenton County Public Works Restroom Renovations

Mr. Hendrix,

The Lusk Group is please to offer the below Scope of Work, and JOC Proposal for your review.

Scope of Work:

- Provide 6-Mill Plastic Sheeting, and HEPA Filtration during Construction of this Scope of Work.
- Existing Fire Devices, Lighting, and Misc. Electronics to be tied-up, or removed and reinstalled as needed for the installation of the Ceilings in the Restrooms.

Men' Restroom

- Demo interior Partition Wall between the Men' Restroom, and Locker Room for the installation of ADA Compliant Restroom.
 - Employee Lockers to be removed and reinstalled as needed for the relocation of Partition Wall, and installation of new Ceramic Flooring. Any Lockers that will not fit in new space will be turned over to Owner.
- Demo interior Restroom Partitions, Specialties, and Fixtures.
- Demo existing Wall, and Floor Tile.
- Install new 3-58" Metal Stud Wall with 5/8" Gypsum Board, and Cement Board for installation of Ceramic Wall Tile. Wing Wall Urinal Screen to have Ceramic Tile.
- Finish Drywall to level 4.
- Provide and supply new Rough-in for Plumbing Fixtures.
- Provide and install new Ceramic Floor Tile & Base.
- Provide and install new Ceramic Wall Tile on Wet Walls, Urinal Screen, and adjacent to Wet Wall. Tile per submittal provided by Owner.
- Paint above Ceramic Tile (3) Coats.
- Provide and install (2) new elongated Flush Valve Type Water Closets. (1) to be ADA.
- Provide and install new Low Use Automatic Urinal.
- Provide and install new Low Use Automatic Lavatory, (2) EA. American Standard Lucerne Wall Hung.
- Provide and install new Partitions.

- Provide and install new Restroom Specialties, Toilet Tissues, Mirrors, and Grab Bars. Soap dispensers to be reused.
- Provide and install (1) Hollow Metal Cased opening into Locker Area. Painted (3) Coats Paint.

Women's Restroom

- Demo interior Partition Wall between the Men' Restroom, and Locker Room for the installation of ADA Compliant Restroom.
 - Employee Lockers to be removed and reinstalled as needed for the relocation of Partition Wall, and installation of new Ceramic Flooring. Any Lockers that will not fit in new space will be turned over to Owner.
- Demo interior Restroom Partitions, Specialties, and Fixtures.
- Demo existing Wall, and Floor Tile.
- Install new 3-58" Metal Stud Wall with 5/8" Gypsum Board, and Cement Board for installation of Ceramic Wall Tile. Wing Wall Urinal Screen to have Ceramic Tile.
- Finish Drywall to level 4.
- Provide and supply new Rough-in for Plumbing Fixtures.
- Provide and install new Ceramic Floor Tile & Base.
- Provide and install new Ceramic Wall Tile on Wet Walls, and adjacent to Wet Wall. Tile per submittal provided by Owner.
- Paint above Ceramic Tile (3) Coats.
- Provide and install (2) new elongated Flush Valve Type Water Closets. (1) to be ADA.
- Provide and install new Low Use Automatic Lavatory, (1) EA. American Standard Lucerne Wall Hung.
- Provide and install new Partitions.
- Provide and install new Restroom Specialties, Toilet Tissues, Mirrors, and Grab Bars. Soap dispensers to be reused.
- Remove and reinstall existing First Aid Cabinet.
- Provide and install (1) Hollow Metal Cased opening into Locker Area. Painted (3) Coats Paint.

Drinking Fountain

- Remove and replace new (1) Drinking Fountain. Drinking Fountain to have bottle fill function.
 - Model No. El Kay EZS8WSLK

Waste Piping

- Remove existing Cast Iron Waste and Vent Piping in the Facility down to the Ground Floor Slab.
- Provide and install new Schedule 40 PVC Waste Piping in the Facility down to the Ground Floor Slab.
- Provide and install new Clean-out at Ground Floor Slab.
-

Please contact the below undersigned for additional information.

Eric Goodman

The Lusk Group
egoodman@theluskgroup.com
 1 (502) 599-6836