

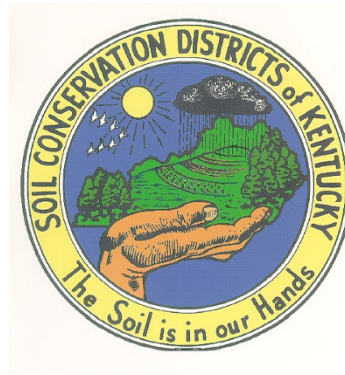
Tree Planting Bars, Sprayers, Seeders

The Kenton County Conservation District has specialized equipment for landowners to rent to install conservation practices on land in Boone, Kenton and Campbell counties. Priority is given to Kenton County landowners. The equipment was purchased with a grant from the Kentucky Soil Erosion and Water Quality Cost Share Program.

Equipment fees for a period of five days, per unit rented, are: Planting Bars, Tree Planting Bags, and Planting Shovels, \$5 plus a \$25 deposit; 5-gallon sprayer, \$25 plus a \$50 deposit; ATV sprayer, \$75 plus a \$100 deposit; and sling seeder for native grasses, \$50 plus a \$100 deposit. Equipment should be reserved in advance, and must be picked up and returned to the Kenton County Conservation District office. Payment for equipment rental and deposit are due at the time equipment is picked up.



No charge, credit card, debit card, or cash payments will be accepted. Deposits will be refunded by check if equipment is returned clean and in good condition. Payment must be made by check and money order only to the **Kenton County Conservation District**. A lease contract is available at the conservation district office, or on our web site at www.kentoncounty.org.



Technical advice and planning assistance for your conservation projects are available through your Conservation District office.

Boone County Conservation District
6028 Camp Ernst Road
Burlington, KY 41005
Phone: 859-586-7903
www.boonecountyky.org/bccd/
FAX: 859-586-7683
Boone@nkcd.org

Kenton County Conservation District
6028 Camp Ernst Road
Burlington, KY 41005
Phone: 859-586-7903
www.kentoncounty.org
FAX: 859-586-7683
Kenton@nkcd.org

All programs and services of the Natural Resources Conservation Service and Conservation Districts are offered on a nondiscriminatory basis without regard to race, color, national origin, sex, sexual orientation, religion, age, disability, political beliefs, and marital or familial status.

Conservation Equipment for Rent



**Native Grass
No-Till Seeder**

Tree Planter

Tree Planting Equipment

Sprayers

Sling Seeder

Truax FlexII-88G No Till Drill for Native Warm Season Grasses



The Truax FlexII-88G Drill is designed for pasture and hayland renovation and seeding. You will need at least a 40-horse power tractor with hydraulic hookups to operate the drill.

Native warm season grasses can help boost your pasture's forage production since they produce all their growth

during the hot summer months when cool season grasses are not producing as well. But, establishing native grassland species can be difficult due to the fluffy nature of the seed. It requires specialized equipment to plant it in large areas.

Native grasses and native grass mixtures that include forbs should be planted between April 15 and June 30.

The drill was purchased by the Boone County Conservation District with assistance from the Ky. Department of Fish and Wildlife Resources and Northern Ky. Chapter of Quail Unlimited to rent to Northern Kentucky landowners.



Fesco Model 1.5 Tree Planter

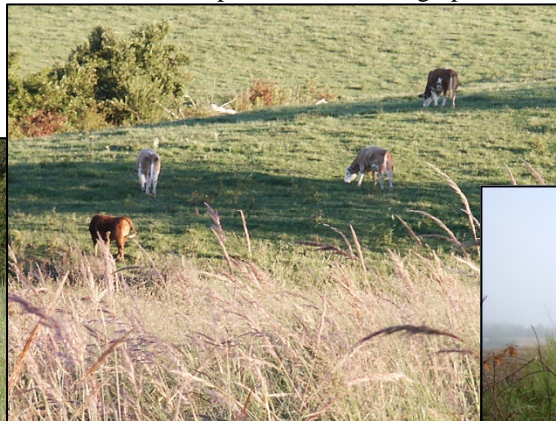


The Fesco Model 1.5 Tree Planter is designed for planting tree seedlings for small to medium sized tree planting projects. It requires at least a 25-horse power tractor. This three-point hitch tree planter is equipped with an adjustable 24" leading coulter followed by a 1-1/2" thick chisel type planter foot with adjustable depth and replaceable point.

The tree planter was purchased by the Boone County Conservation District through a grant from the Kentucky Soil Erosion and Water Quality Cost Share Fund.

Conservation District staff will assist you by assessing your site. Sites that are considered too rocky, or that have other obstructions such as tree stumps, are not appropriate for equipment use.

Several state and federal agencies are available to help private landowners improve land and apply conservation practices to farming operations. Cost share assistance may also be available.



Rental Agreement

A lease contract with more information is available at the conservation district office, or on our web site at www.boonecountyky.org/bccd/

Charges and payments

The charge for the lease of the drill is \$125 per 24- hour day (8:00 a.m. to 8:00 a.m. the next day) or \$62.50 for 9 ½ hour (8:00 a.m. – 4:30 p.m. same day).

The charge for the lease of the tree planter is \$40 per day (8:00 a.m. to 8:00 a.m. the next day).

If the equipment is picked up Friday for a 24-hour rental, the equipment cannot be returned until Monday at 8:00 a.m., a 2-day charge will be assessed.

The equipment is housed at the Boone County Parks Maintenance facility, and must be picked up and returned during regular business hours, 8:00 a.m. - 4:30 p.m.

Payment for equipment rental is due upon return, and payment should be made by **check or money order only**. We cannot accept charge, credit cards, debit cards, or cash payments.

To schedule use of the equipment, contact the Boone County Conservation District. We recommend you schedule the equipment as far in advance as possible.

Checks and money orders should be made payable to **Boone County Conservation District**.