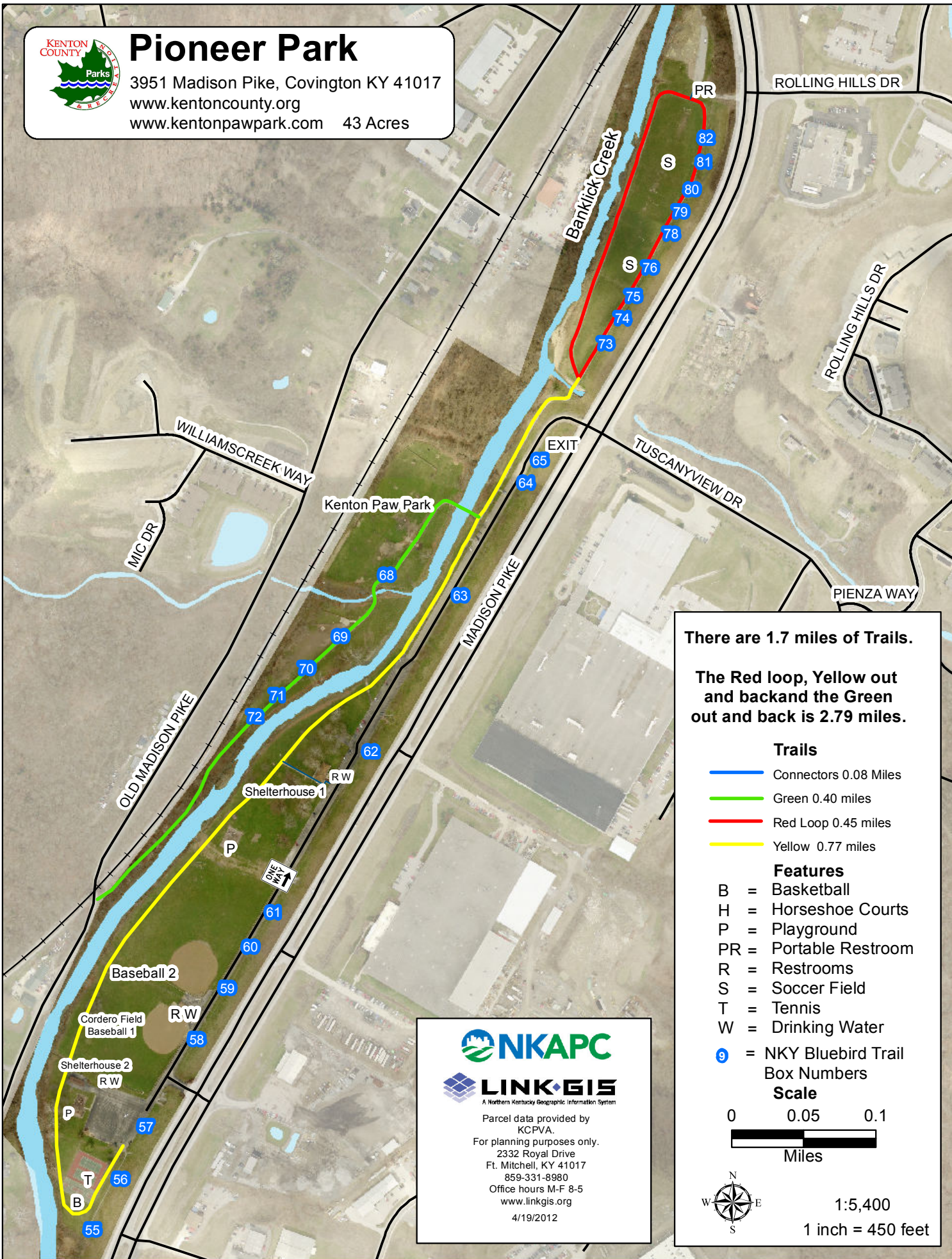




Pioneer Park

3951 Madison Pike, Covington KY 41017
www.kentoncounty.org
www.kentonpawpark.com 43 Acres

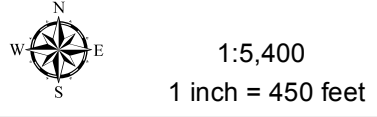
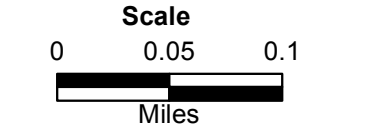


There are 1.7 miles of Trails.

The Red loop, Yellow out and back and the Green out and back is 2.79 miles.

- Trails**
- Connectors 0.08 Miles
 - Green 0.40 miles
 - Red Loop 0.45 miles
 - Yellow 0.77 miles

- Features**
- B = Basketball
 - H = Horseshoe Courts
 - P = Playground
 - PR = Portable Restroom
 - R = Restrooms
 - S = Soccer Field
 - T = Tennis
 - W = Drinking Water
 - 9 = NKY Bluebird Trail Box Numbers



NKAPC
A Northern Kentucky Geographic Information System

LINK GIS
A Northern Kentucky Geographic Information System

Parcel data provided by KCPVA.
For planning purposes only.
2332 Royal Drive
Ft. Mitchell, KY 41017
859-331-8980
Office hours M-F 8-5
www.linkgis.org
4/19/2012