

Conservation practices eligible for cost share

Fence

- Livestock must be present.
- Available along creeks, streams, woodlands, wetlands, karst basins.
- Property line fence & cross-fencing not eligible.
- Fencing must be installed with a 20' setback.

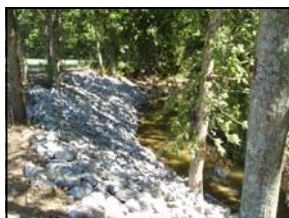


Stream Crossing

- Authorized only where livestock need a crossing point on a stream and/or to provide livestock water.
- Stream must be fenced or planned to be fenced.

Streambank Stabilization

- Fencing is required where cattle are present.
- A filter strip or riparian buffer is required in conjunction with this practice.



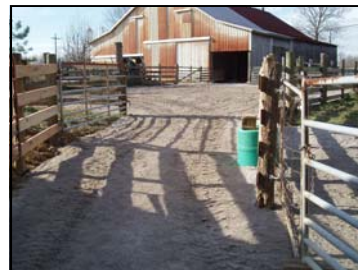
Waste Storage Facility

- Feeding floor is not eligible for cost share.
- A comprehensive nutrient management plan is required.
- Must be used to control manure storage, not for hay storage.



Heavy Use Area

- Livestock must be present.
- To prevent degradation of areas suitable for the winter feeding of cattle.



Pasture and Hayland Planting

- Cropland conversion to native or introduced species on HEL ground.
- Fields with more than 20% fescue eligible for conversion to native or introduced species.
- Renovations are not eligible.
- Minimum of 5 contiguous acres.

Waste Utilization

- Only animal waste applications eligible.
- Soil and manure tests required.
- Must have an existing or planned storage facility.

Other Practices:

- Diversion
- Filter Strip
- Sinkhole Protection
- Grassed Waterway
- Cropland Erosion Control
- Integrated Cropping Systems
- Forest Stand Improvement
- Tree/Shrub Establishment
- Shallow Water Development
- Wildlife Watering Facility

Pipeline and Watering Facility

- Livestock must be present.
- The purpose of the water development is to distribute grazing.
- Only permanent tanks/fountains and in-ground pipelines eligible.
- Confined lots are not eligible.



Ponds and spring developments will be considered for funding only when they are the most cost-effective means for the government.

Spring Development

- Livestock must be present.
- Authorized to facilitate livestock grazing.
- Must be fenced from livestock.



Pond

- Livestock must be present
- Eligible only where there is no other source of water.
- Must incorporate a rotational grazing plan with a minimum of 2 - 4 pastures.
- Must be fenced with pipeline and tank placed below dam.

The Kentucky Soil Erosion and Water Quality Cost Share Program

was established to help landowners address existing soil erosion, water quality and other environmental problems associated with their farming or woodland operation. It also helps landowners implement their Agriculture Water Quality Act plans.

- Funding for practices will be approved by the Soil and Water Conservation Commission at the Kentucky Division of Conservation, located in Frankfort, as funds are available.
- Funds are for new practices only and cannot be applied to practices that have already been started or completed.
- The maximum cost share an operation can receive is \$20,000 per program year.

The Environmental Quality Incentives Program (EQIP)

is a voluntary conservation program of the federal Farm Bill for farmers and ranchers that promotes agricultural production and environmental quality. EQIP offers financial and technical help to assist eligible participants install or implement structural and management practices on eligible agricultural land.

EQIP offers contracts with a minimum term that ends one year after the implementation of the last scheduled practices and a maximum term of ten years. These contracts provide incentive payments to implement conservation practices.

Persons who are engaged in livestock or agricultural production on eligible land may participate in the EQIP program.



Boone County Conservation District

859-586-7903

6028 Camp Ernst Road - Burlington, KY 41005

E-mail: Kristin.Scott@ky.nacdnet.net

www.boonecountyky.org/bccd/default.aspx

Campbell County Conservation District

859-635-9587

8351 E. Main Street, Ste 104

Alexandria, KY 41001

E-mail: campbellcd@fuse.net

E-mail: Kristin.Scott@ky.nacdnet.net

<http://home.fuse.net/campbellcd>

Kenton County Conservation District

859-586-7903

6028 Camp Ernst Road - Burlington, KY 41005

E-mail: Kristin.Scott@ky.nacdnet.net

www.kentoncounty.org/conservation_district/index.html

United States Department of Agriculture



Natural Resources Conservation Service

859-586-7903

6028 Camp Ernst Road - Burlington, KY 41005

Ed L. Thompson Jr., District Conservationist

Ed.Thompson@ky.usda.gov

#

All programs and services of the United States Department of Agriculture Natural Resources Conservation Service and the Boone, Kenton and Campbell County Conservation Districts are offered on a nondiscriminatory basis, without regard to race, color, national origin, sex, sexual orientation, religion, age, disability, political beliefs and marital or familial status.

Cost Share Programs for Agricultural Producers

Kentucky Soil Erosion & Water Quality Cost Share Program &

USDA Environmental Quality Incentives Program (EQIP)



Application and ranking dates for 2009 have not been announced.